

Anti-IL-6 Antibody

Catalog Number: A00102-1

About IL6

Anti-IL-6 antibody is validated by ELISA, Immunohistochemistry and Western Blot Assays. IL-6 is a secreted cytokine with a wide variety of biological functions. It is a potent inducer of the acute phase response and plays an essential role in the final differentiation of B-cells into Ig-secreting cells Involved in lymphocyte and monocyte differentiation. IL-6 induces myeloma and plasmacytoma growth and induces nerve cells differentiation and acts on B-cells, T-cells, hepatocytes, hematopoietic progenitor cells and cells of the CNS. IL-6 also acts as a myokine. It is discharged into the bloodstream after muscle contraction and acts to increase the breakdown of fats and to improve insulin resistance.

Overview

Product Name	Anti-IL-6 Antibody
Reactive Species	Human
Description	Boster Bio Anti-IL-6 Antibody (Catalog # A00102-1). Tested in IHC, WB applications. This antibody reacts with Human.
Application	ELISA, IHC, WB
Clonality	Polyclonal
Formulation	0.02 M Potassium Phosphate, 0.15 M Sodium Chloride, pH 7.2
Storage Instructions	Store vial at 4°C prior to restoration. For extended storage aliquot contents and freeze at -20°C or below. Avoid cycles of freezing and thawing. Centrifuge product if not completely clear after standing at room temperature. This product is stable for several weeks at 4°C as an undiluted liquid. Dilute only prior to immediate use. Expiration date is one (1) year from date of opening. (Ship at ambient temperature.)
Host	Rabbit
Uniprot ID	P05231

Technical Details

Immunogen	This purified antibody was prepared from whole rabbit serum produced by repeated immunizations with mature length recombinant human IL-6 produced in E.coli.
Predicted Reactive Species	Bovine, Canine, Monkey
Isotype	IgG
Form	Lyophilized
Concentration	1.0 mg/mL by UV absorbance at 280 nm
Purification	IL-6 antibody detects recombinant and native IL-6 present in body fluids and cell supernatants in

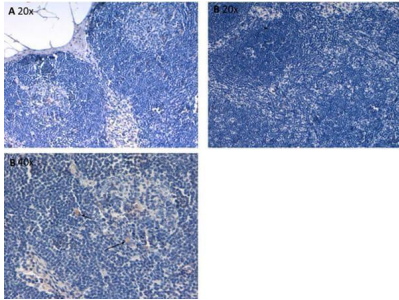
various assays (ie. IL-1 stimulated IL-6 production from fibroblasts). In Western blot analysis of natural cell products or human body fluids, multiple bands of IL-6 will appear due to the variable amount of glycosylation on the molecule. The antiserum is also useful for neutralization of human of IL-6 activity in bioassays. For neutralization, incubate the sample with a 1:400 dilution of the antiserum for at least 4 hours before being tested. A control of similarly diluted normal rabbit IgG (heat inactivated) is recommended. In neutralization experiments in vitro, this antibody does not result in enhanced activity of IL-6. However, because antibodies to IL-6 may act as a soluble receptor in vivo, some antibodies to IL-6 act as carriers and enhance IL-6 activity. This product has minimal reactivity with mouse IL-6.

Suggested Dilutions

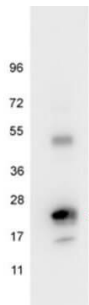
ELISA: 1:10,000
IHC: 1:200 - 1:1,000
WB: 1:300 - 1:1,000

This purified antibody has been tested for use in IHC and western blotting. Reactivity is also expected in ELISA, neutralizations, radioimmunoassay and immunohistochemistry. The endotoxin content is estimated to be <10 pg/μl by the LAL method. By western blot a band approximately 23.7 kDa in size corresponding to native human IL-6 protein is expected in the appropriate cell lysate or extract. Specific conditions for reactivity should be optimized by the end user.

Anti-IL-6 Antibody (A00102-1) Images



Immunohistochemistry of Rabbit Anti-IL6-Antibody. Tissue: human lymph nodes at pH9. Fixation: formalin fixed paraffin embedded. Antigen retrieval: not required. Primary antibody: Anti-IL-6 antibody at 10 µg/mL for 1 h at RT. Secondary antibody: Peroxidase rabbit secondary antibody at 1:10,000 for 45 min at RT. Localization: IL-6 is cytoplasmic. Staining: IL-6 as precipitated brown signal (B 20x, C 40x) hematoxylin purple nuclear counterstain. Negative Control (A 20x).



Western blot using Boster's anti-Human IL6 antibody shows detection of a band ~24 kDa in size corresponding to recombinant human IL6 (arrowhead). Molecular weight markers are also shown. After transfer, the membrane was blocked overnight with 1% BSA in TTBS followed by reaction with primary antibody at a 1:500 dilution. Detection occurred using HRP conjugated anti-Rabbit IgG secondary antibody diluted 1:40,000 in blocking buffer and FentoMax™ Chemiluminescent substrate. Image was captured using VersaDoc MP 4000 imaging system (Bio-Rad).

13 Publications Citing This Product

1. PubMed ID: 10.3892/ol.2014.2621, Upregulation of Toll-like receptor 2 expression in colorectal cancer infected by human cytomegalovirus
2. PubMed ID: 10.1016/j.lfs.2020.117292, Nifedipine inhibits oxidative stress and ameliorates osteoarthritis by activating the nuclear factor erythroid-2-related factor 2 pathway
3. PubMed ID: 31056761, Feng X, Yang M, Yang Z, Qian Q, Burns EM, Min W. Abnormal expression of the co-stimulatory molecule B7-H3 in lichen simplex chronicus is associated with expansion of Langerhans cells. Clin Exp Dermatol. 2020 Jan;45(1):30-35. doi:10.1111/ced.14001. Epub 2019 Jul 3

Visit [bosterbio.com/anti-il-6-antibody-a00102-1-boster.html](https://www.bosterbio.com/anti-il-6-antibody-a00102-1-boster.html) to see all 13 publications.

Submit a product review to Biocompare.com

Submit a review of this product to Biocompare.com to receive a \$20 Amazon.com giftcard! Your reviews help your fellow scientists make the right decisions. Thank you for your contribution.



Anti-IL-6 Antibody

For Research Use Only. Not for use in diagnostic procedures.