

Anti-IL-6 Antibody

Catalog Number: A00102-3

About IL6

Anti-IL-6 Antibody recognizes human IL-6 that is a secreted cytokine with a wide variety of biological functions. IL-6 is a potent inducer of the acute phase response and plays an essential role in the final differentiation of B-cells into Ig-secreting cells involved in lymphocyte and monocyte differentiation. IL-6 induces myeloma and plasmacytoma growth and induces nerve cells differentiation and acts on B-cells, T-cells, hepatocytes, hematopoietic progenitor cells and cells of the CNS. IL-6 also acts as a myokine. It is discharged into the bloodstream after muscle contraction and acts to increase the breakdown of fats and to improve insulin resistance. [Anti-IL6 antibody](#) is ideal for investigators involved in Immunology and Cancer research.

Overview

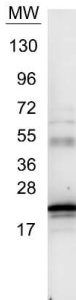
Product Name	Anti-IL-6 Antibody
Reactive Species	Human
Description	Boster Bio Anti-IL-6 Antibody (Catalog # A00102-3). Tested in Dot blot, WB applications. This antibody reacts with Human.
Application	ELISA, IP, IHC, WB
Clonality	Polyclonal
Formulation	0.02 M Potassium Phosphate, 0.15 M Sodium Chloride, pH 7.2
Storage Instructions	Store vial at -20°C prior to opening. Aliquot contents and freeze at -20°C or below for extended storage. Avoid cycles of freezing and thawing. Centrifuge product if not completely clear after standing at room temperature. This product is stable for several weeks at 4°C as an undiluted liquid. Dilute only prior to immediate use. Expiration date is one (1) year from date of opening. (Ship on dry ice.)
Host	Rabbit
Uniprot ID	P05231

Technical Details

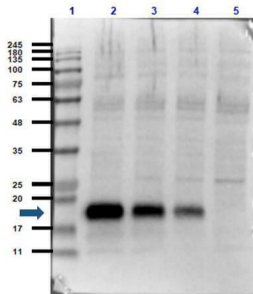
Immunogen	This whole rabbit serum was prepared by repeated immunizations with recombinant human IL-6 produced in E.coli.
Predicted Reactive Species	Bovine, Goat, Guinea Pig, Hamster, Monkey, Sheep
Cross Reactivity	Detects ~20kDa. Does not cross-react with alphaB-crystallin, betaL-crystallin, ̢H-crystallin, gamma-crystallin, HSP25, HSP27 or HSP47 proteins.
Isotype	Antiserum

Form	Liquid (sterile filtered)
Concentration	80 mg/mL by Refractometry
Purification	Anti-IL-6 antiserum detects recombinant and native IL-6 present in body fluids and cell supernatants in various assays (ie. IL-1 stimulated IL-6 production from fibroblasts). This product has minimal reactivity with mouse IL-6.
Suggested Dilutions	<p>ELISA: 1:1,000 - 1:5,000 IHC: 1:400 - 1:800 IP: 1:400 - 1:800 WB: 1:500 - 1:2,000 Neutralization: 1:400</p> <p>IL-6 antibody has been tested in western blot. This antibody is suitable for use in neutralizations, ELISA, radioimmunoassay, and immunoprecipitation. Reactivity in other immunoassays is unknown. Expect ~23.7kDa. In Western blot analysis of natural cell products or human body fluids, multiple bands of IL-6 will appear due to the variable amount of glycosylation on the molecule. For immunoblot use the supernatants or lysates of 2×10^6 endotoxin-stimulated human peripheral blood mononuclear cells (PBMC). PBMC are stimulated for 24 hours with 1% (v/v) human serum plus 10ng/mL E. coli LPS. For immunoprecipitation, pre-clearing with a non-specific rabbit IgG is helpful to reduce background. The antiserum is useful for neutralization of human of IL-6 activity in bioassays. For neutralization, incubate the sample with a 1:400 dilution of the antiserum for at least 4 hours before being tested. A control of similarly diluted normal rabbit IgG (heat inactivated) is recommended. In neutralization experiments in vitro, this antibody does not result in enhanced activity of IL-6. However, because antibodies to IL-6 may act as a soluble receptor in vivo, some antibodies to IL-6 act as carriers and enhance IL-6 activity.</p>

Anti-IL-6 Antibody (A00102-3) Images



Western blot using Boster's Anti-IL6 antibody. Protein was resolved on a 4-20% Tris-Glycine gel by SDS-PAGE and transferred onto nitrocellulose. The blot shows detection of a band ~21 kDa in size corresponding to anti-IL6 antibody. Molecular weight markers are also shown (MW). After transfer, the membrane was blocked for 30 minutes with 1% BSA-TBST. Detection occurred using peroxidase conjugated Goat anti-Rabbit IgG secondary antibody diluted 1:40,000 in blocking buffer for 30 min at RT followed by reaction with FemtoMax™ chemiluminescent substrate. Image was captured using VersaDoc™ MP 4000 imaging system (Bio-Rad).



Western Blot of Rabbit Anti-IL-6 Antibody. Lane 1: Opal Prestained Molecular Weight Marker . Lane 2: Human Rec. IL-6/HeLa Whole Cell Lysate [0.05µg/10µg]. Lane 3: Human Rec. IL-6/HeLa Whole Cell Lysate [0.02µg/10µg]. Lane 4: Human Rec. IL-6/HeLa Whole Cell Lysate [0.01µg/10µg]. Lane 5: HeLa Whole Cell Lysate [10µg]. Primary Antibody: Anti-IL-6 at 1:1000 overnight at 2-8°C. Secondary Antibody: Goat Anti-Rabbit IgG HRP conjugate at 1:70,000 for 30mins at RT. Block: BlockOut Buffer . Predicted MW: ~23kDa. Observed MW: ~19 Exposure: 2 seconds.

10 Publications Citing This Product

1. PubMed ID: 24603891, Sun W, Liu Db, Li Ww, Zhang Li, Long Gx, Wang Jf, Mei Q, Hu Gq. Int J Oncol. 2014 May;44(5):1551-60. Doi: 10.3892/Ijo.2014.2323. Epub 2014 Mar 5. Interleukin-6 Promotes The Migration And Invasion Of Nasopharyngeal Carcinoma Cell Lines And Upregula...
2. PubMed ID: 26990441, Inhibition of Acute Lung Injury by TNFR-Fc through Regulation of an Inflammation-Oxidative Stress Pathway
3. PubMed ID: 27463015, Potential implications of Apolipoprotein E in early brain injury after experimental subarachnoid hemorrhage: Involvement in the modulation of blood-brain barrier integrity

Visit bosterbio.com/anti-il-6-antibody-a00102-3-boster.html to see all 10 publications.

Submit a product review to Biocompare.com

Submit a review of this product to Biocompare.com to receive a \$20 Amazon.com giftcard! Your reviews help your fellow scientists make the right decisions. Thank you for your contribution.



Anti-IL-6 Antibody

For Research Use Only. Not for use in diagnostic procedures.