

Anti-SRC Antibody (N-term)

Catalog Number: A00107

About SRC

The gene for SRC is highly similar to the v-src gene of Rous sarcoma virus. This proto-oncogene may play a role in the regulation of embryonic development and cell growth. SRC, the protein encoded by this gene, is a tyrosine-protein kinase whose activity can be inhibited by phosphorylation by c-SRC kinase. Mutations in SRC could be involved in the malignant progression of colon cancer.

Overview

Product Name	Anti-SRC Antibody (N-term)
Reactive Species	Human, Mouse
Description	Boster Bio Anti-SRC Antibody (N-term) (Catalog # A00107). Tested in WB, IF, IHC-P application(s). This antibody reacts with Human, Mouse.
Application	IF, IHC-P, WB
Clonality	Polyclonal
Formulation	Purified polyclonal antibody supplied in PBS with 0.09% (W/V) sodium azide.
Storage Instructions	Maintain refrigerated at 2-8°C for up to 2 weeks. For long-term storage, store at -20°C in small aliquots to prevent freeze-thaw cycles.
Host	Rabbit
Uniprot ID	P12931

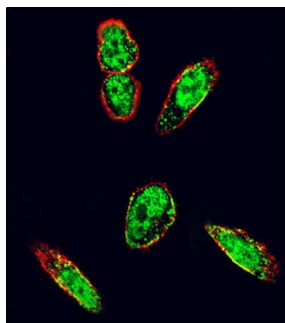
Technical Details

Immunogen	This SRC antibody is generated from rabbits immunized with a KLH conjugated synthetic peptide between 1-30 amino acids from the N-terminal region of human SRC.
Predicted Reactive Species	Chicken, Rat
Recommended Detection Systems	Boster recommends Enhanced Chemiluminescent Kit with anti-Rabbit IgG (EK1002) for Western blot, and HRP Conjugated anti-Rabbit IgG Super Vision Assay Kit (SV0002-1) for IHC(P).
Cross Reactivity	No cross reactivity with other proteins.
Isotype	Rabbit IgG
Form	Liquid
Purification	This antibody is prepared by Saturated Ammonium Sulfate (SAS) precipitation followed by dialysis against PBS.

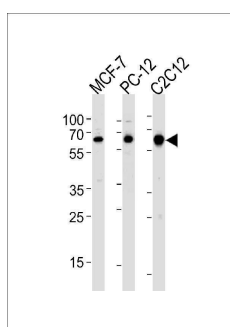
Suggested Dilutions

IF: 1:10-1:50
WB: 1:1000
IHC-P: 1:50-1:100

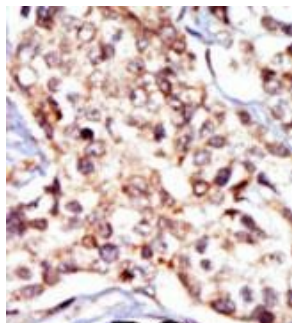
Anti-SRC Antibody (N-term) (A00107) Images



Confocal immunofluorescent analysis of SRC Antibody (N-term) with A375 cell followed by Alexa Fluor 488-conjugated goat anti-rabbit IgG (green). Actin filaments have been labeled with Alexa Fluor 555 phalloidin (red).



Western blot analysis of lysates from MCF-7, rat PC-12, mouse C2C12 cell line (from left to right), using SRC Antibody (R14) (Cat. #A00107). A00107 was diluted at 1:1000 at each lane. A goat anti-rabbit IgG H&L (HRP) at 1:5000 dilution was used as the secondary antibody. Lysates at 35ug per lane.



Formalin-fixed and paraffin-embedded human cancer tissue reacted with the primary antibody, which was peroxidase-conjugated to the secondary antibody, followed by DAB staining. This data demonstrates the use of this antibody for immunohistochemistry; clinical relevance has not been evaluated. BC = breast carcinoma; HC = hepatocarcinoma.

Submit a product review to [Biocompare.com](https://www.biocompare.com)

Submit a review of this product to [Biocompare.com](https://www.biocompare.com) to receive a \$20 Amazon.com giftcard! Your reviews help your fellow scientists make the right decisions. Thank you for your contribution.



Anti-SRC Antibody (N-term)

For Research Use Only. Not for use in diagnostic procedures.