

Anti-c-Src (phospho-Y529) Antibody

Catalog Number: A00107Y529

Overview

Product Name	Anti-c-Src (phospho-Y529) Antibody
Reactive Species	Human, Mouse, Rat
Description	Boster Bio Anti-c-Src (phospho-Y529) Antibody catalog # A00107Y529. Tested in WB,IHC applications. This antibody reacts with Human,Mouse,Rat.
Application	IHC, WB
Clonality	Polyclonal
Formulation	Rabbit IgG, 1mg/ml in PBS with 0.02% sodium azide, 50% glycerol, pH7.2
Storage Instructions	Store at -20°C for one year. For short term storage and frequent use, store at 4°C for up to one month. Avoid repeated freeze-thaw cycles.
Host	Rabbit
Uniprot ID	P12931

Technical Details

Immunogen	Synthetic phosphopeptide derived from human c-Src around the phosphorylation site of Tyrosine 529.
Cross Reactivity	No cross reactivity with other proteins.
Isotype	IgG
Form	Liquid
Concentration	1 mg/ml
Purification	The antibody was affinity-purified from rabbit antiserum by affinity-chromatography using epitope-specific immunogen and the purity is > 95% (by SDS-PAGE).
Suggested Dilutions	WB: 1:500-1:1000 IHC: 1:50-1:200

Anti-c-Src (phospho-Y529) Antibody (A00107Y529) Images

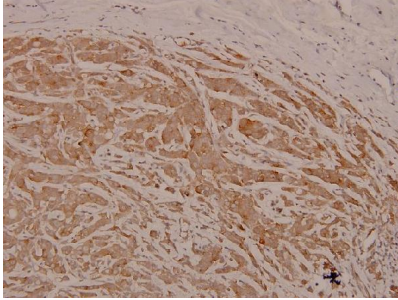


Figure 2. Immunohistochemistry validation of SRC using Anti-c-Src (phospho-Y529) Antibody (A00107Y529).

Immunohistochemistry (IHC) analyzes of p-c-Src (Y529) pAb in paraffin-embedded human breast carcinoma tissue at 1:100.

For more protocol information of IHC

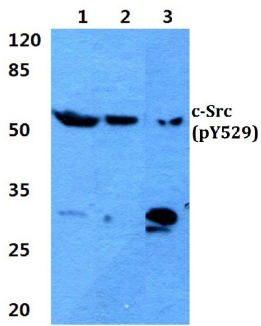


Figure 1. Western blotting validation for Anti-c-Src (phospho-Y529) Antibody A00107Y529

Western blot (WB) analysis of p-c-Src (Y529) pAb at 1:500 dilution

Lane1:A375 whole cell lysate(20ug)

Lane2:The Uterus tissue lysate of Mouse(20ug)

Lane3:The Uterus tissue lysate of Rat(20ug)

Electrophoresis was performed on a SDS-PAGE gel. To determine SDS-PAGE gel concentration

Submit a product review to Biocompare.com

Submit a review of this product to Biocompare.com to receive a \$20 Amazon.com giftcard! Your reviews help your fellow scientists make the right decisions. Thank you for your contribution.



Anti-c-Src (phospho-Y529) Antibody