

Anti-PD-L1/Cd274 Antibody Picoband®

Catalog Number: A00109-3

About Cd274

Programmed death-ligand 1 (PD-L1), also known as CD274 or B7-H1, is a protein that in humans is encoded by the CD274 gene. It is mapped to 9p24.1. PD-L1 is a 40kDa type 1 transmembrane protein that has been speculated to play a major role in suppressing the immune system during particular events such as pregnancy, tissue allografts, autoimmune disease and other disease states such as hepatitis. It has been concluded that upregulation of PD-L1 on tumor MDCs downregulates T-cell immunity and that PD-L1 blockade may represent an approach for cancer immunotherapy. Additionally, PD-L1 can provide positive costimulatory signals for innate and adaptive immunity and for protection against intracellular bacterial infection. What's more, it has been found that PD1/PDL1 pathway may be a good target for restoring antitumor immunity in ovarian cancer.

Overview

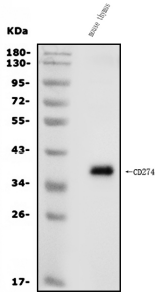
Product Name	Anti-PD-L1/Cd274 Antibody Picoband®
Reactive Species	Mouse
Description	Boster Bio Anti-PD-L1/Cd274 Antibody Picoband® catalog # A00109-3. Tested in ELISA, WB applications. This antibody reacts with Mouse. The brand Picoband indicates this is a premium antibody that guarantees superior quality, high affinity, and strong signals with minimal background in Western blot applications. Only our best-performing antibodies are designated as Picoband, ensuring unmatched performance.
Application	ELISA, WB
Clonality	Polyclonal
Formulation	Each vial contains 4mg Trehalose, 0.9mg NaCl and 0.2mg Na ₂ HPO ₄ .
Storage Instructions	Store at -20°C for one year from date of receipt. After reconstitution, at 4°C for one month. It can also be aliquotted and stored frozen at -20°C for six months. Avoid repeated freeze-thaw cycles.
Host	Rabbit
Uniprot ID	Q9EP73

Technical Details

Immunogen	E.coli-derived mouse PD-L1/Cd274 recombinant protein (Position: E45-H239).
Recommended Detection Systems	Boster recommends Enhanced Chemiluminescent Kit with anti-Rabbit IgG (EK1002) for Western blot.
Cross Reactivity	No cross-reactivity with other proteins.
Isotype	Rabbit IgG

Form	Lyophilized
Concentration	Adding 0.2 ml of distilled water will yield a concentration of 500 ug/ml.
Purification	Immunogen affinity purified.
Suggested Dilutions	Western blot, 0.25-0.5ug/ml, Mouse ELISA, 0.1-0.5ug/ml, -

Anti-PD-L1/Cd274 Antibody Picoband® (A00109-3) Images



Western blot analysis of PD-L1/Cd274 using anti-PD-L1/Cd274 antibody (A00109-3). Electrophoresis was performed on a 5-20% SDS-PAGE gel at 70V (Stacking gel) / 90V (Resolving gel) for 2-3 hours. The sample well of each lane was loaded with 30ug of sample under reducing conditions. Lane 1: mouse thymus tissue lysates. After Electrophoresis, proteins were transferred to a Nitrocellulose membrane at 150mA for 50-90 minutes. Blocked the membrane with 5% Non-fat Milk/ TBS for 1.5 hour at RT. The membrane was incubated with rabbit anti-PD-L1/Cd274 antigen affinity purified polyclonal antibody (Catalog # A00109-3) at 0.5 ug/mL overnight at 4°C, then washed with TBS-0.1%Tween 3 times with 5 minutes each and probed with a goat anti-rabbit IgG-HRP secondary antibody at a dilution of 1:5000 for 1.5 hour at RT. The signal is developed using an Enhanced Chemiluminescent detection (ECL) kit (Catalog # EK1002) with Tanon 5200 system. A specific band was detected for PD-L1/Cd274 at approximately 40KD. The expected band size for PD-L1/Cd274 is at 40KD.

1 Publications Citing This Product

1. PubMed ID: 33152901, He J,Zhang W,Di T,Meng J,Qi Y,Li G,Zhang Y,Su H,Yan W.Water extract of sporoderm-broken spores of Ganoderma lucidum enhanced pd-l1 antibody efficiency through downregulation and relieved complications of pd-l1 monoclonal antibody.Biomed Pharmacother.2020

Visit bosterbio.com/anti-pd-l1-cd274-picoband-trade-antibody-a00109-3-boster.html to see all 1 publications.

Submit a product review to Biocompare.com

Submit a review of this product to Biocompare.com to receive a \$20 Amazon.com giftcard! Your reviews help your fellow scientists make the right decisions. Thank you for your contribution.



Anti-PD-L1/Cd274 Antibody

For Research Use Only. Not for use in diagnostic procedures.