

## Anti-Phospho-Sp1 (T739) Antibody

Catalog Number: A00110T739

### About SP1

Ras proteins bind GDP/GTP and possess intrinsic GTPase activity.

Akiyuki Takaya, Mol. Biol. Cell, May 2007; 18: 1850 - 1860.

Waleed F. Khalaf, J. Immunol., Feb 2007; 178: 2527 - 2534.

Izumi Oinuma, J. Biol. Chem., Jan 2007; 282: 303 - 318.

Paul M. Campbell, Cancer Res., Mar 2007; 67: 2098 - 2106.

### Overview

Product Name	Anti-Phospho-Sp1 (T739) Antibody
Reactive Species	Human, Monkey, Mouse, Rat
Description	Boster Bio Anti-Phospho-Sp1 (T739) Antibody catalog # A00110T739. Tested in ELISA, IHC, WB applications. This antibody reacts with Human, Monkey, Mouse, Rat.
Application	ELISA, IHC, WB
Clonality	Polyclonal
Formulation	Liquid in PBS containing 50% glycerol, 0.5% BSA and 0.02% sodium azide.
Storage Instructions	Store at -20°C for one year. For short term storage and frequent use, store at 4°C for up to one month. Avoid repeated freeze-thaw cycles.
Host	Rabbit
Uniprot ID	P08047

### Technical Details

Immunogen	Synthesized peptide derived from human Sp1 around the phosphorylation site of T739.
Predicted Reactive Species	Canine, Monkey
Cross Reactivity	No cross reactivity with other proteins.
Isotype	IgG
Form	Liquid
Concentration	1 mg/ml
Purification	The antibody was affinity-purified from rabbit antiserum by affinity-chromatography using epitope-

	specific immunogen.
Suggested Dilutions	<p>Dilute the sample so that the expected range of concentrations fall within the detection range of this kit.</p> <p>If the expected range of concentration is unknown, a pilot test should be conducted to decide the optimal dilution ratio for your samples.</p> <p>Some PubMed article(s) citing the expression level of this target are as follows:</p> <p>Boster Bio's internal QC testing used:</p> <p>WB 1:500-1:2000</p> <p>IHC 1:100-1:300</p> <p>ELISA 1:5000</p>

## Anti-Phospho-Sp1 (T739) Antibody (A00110T739) Images

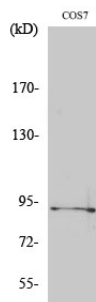


Figure 1. Western blotting validation for Anti-Phospho-Sp1 (T739) Antibody A00110T739

Western Blot (WB) analysis of specific cells using Phospho-Sp1 (T739) polyclonal antibody. Electrophoresis was performed on a SDS-PAGE gel. To determine SDS-PAGE gel concentration

### Submit a product review to Biocompare.com

Submit a review of this product to Biocompare.com to receive a \$20 Amazon.com giftcard! Your reviews help your fellow scientists make the right decisions. Thank you for your contribution.



Anti-Phospho-Sp1 (T739) Antibody