

Anti-IKK beta IKBKB Antibody

Catalog Number: A00118

About IKBKB

NFkB comprises a family of cellular transcription factors that are involved in the inducible expression of a variety of cellular genes that regulate the inflammatory response and control of cell death. In the cytoplasm NFkB is negatively modulated by the inhibitory proteins Ikb. In turn Ikb is phosphorylated by a cellular kinase complex called IKK. IKK is a heterodimer composed of two kinases: IKK-a and IKK-b that phosphorylate Ikb leading to its degradation and the resulting translocation of NFkB to the nucleus. IKK kinase activity is modulated negatively by pharmaceutical agents such as aspirin and positively by various cellular components such as TNF- a, endotoxins and overexpression of cellular kinases like MEKK1. Aspirin appears to have its effect by inhibiting the binding of ATP to IKK.

Overview

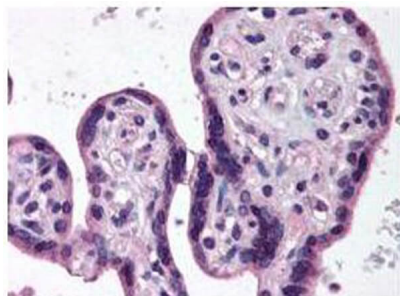
Product Name	Anti-IKK beta IKBKB Antibody
Reactive Species	Human, Mouse, Rat
Description	Boster Bio Anti-IKK beta IKBKB Antibody (Catalog # A00118). Tested in IHC, WB applications. This antibody reacts with Human, Mouse, Rat.
Application	ELISA, IHC, WB
Clonality	Polyclonal
Formulation	0.01% (w/v) Sodium Azide
Storage Instructions	Store vial at -20°C prior to opening. Aliquot contents and freeze at -20°C or below for extended storage. Avoid cycles of freezing and thawing. Centrifuge product if not completely clear after standing at room temperature. This product is stable for several weeks at 4°C as an undiluted liquid. Dilute only prior to immediate use. Expiration date is one (1) year from date of opening. (Ship on dry ice.)
Host	Rabbit
Uniprot ID	O14920

Technical Details

Immunogen	IKKb peptide corresponding to the highly conserved C-terminus region of the human protein conjugated to Keyhole Limpet Hemocyanin (KLH).
Predicted Reactive Species	Bovine, Canine, Equine, Guinea Pig, Rabbit, Sheep
Isotype	Antiserum
Form	Liquid (sterile filtered)
Concentration	80 mg/mL by Refractometry

Purification	This product was prepared from monospecific antiserum by delipidation and defibrination. Anti-IKKb may react non-specifically with other proteins. Control peptide (code #100-401-220p) will compete only with the specific reaction of antiserum with the IKKb subunit.
Suggested Dilutions	ELISA: 1:1,000 - 1:5,000 IHC: 1:200 - 1:1,000 WB: 1:200 - 1:1,000 This product was tested by immunoblot and found to be reactive against IKK-b at a dilution of 1:1000 followed by reaction with Peroxidase conjugated Affinity Purified anti-Rabbit IgG [H&L] (Goat) code #611-1302. Anti-IKKb is suitable for the detection by immunoblot of human, mouse and rat IKKb showing an 87 kDa band. Anti-IKKb has been tested in IHC using human placenta tissue.

Anti-IKK beta IKBKB Antibody (A00118) Images



Immunohistochemistry of Anti-IKK β antibody. Tissue: human placenta was formalin fixed and paraffin embedded. No pre-treatment of sample was required. Primary Antibody: Anti-IKK β was diluted 1:500 to detect IKK β in tissue. The image shows the localization of antibody as the precipitated red signal, with a hematoxylin purple nuclear counter stain.



Western blot of anti-IKK β antibody reacted with HeLa cell extract. All incubations except color development were performed using TBS supplemented with 0.1% Tween-20 at room temperature. The membrane was blocked in 5% dry milk for 2 h. After washing, a 1:500 dilution of the primary antibody was added to the membrane and incubated for 2 h. Washes with buffer were performed 4 times for 5' each. The western blot was incubated with secondary antibody (HRP Goat-a-Rabbit IgG [H&L]) diluted 1:2,000 for 1h. Washes with TBS preceded color development.

Submit a product review to Biocompare.com

Submit a review of this product to Biocompare.com to receive a \$20 Amazon.com giftcard! Your reviews help your fellow scientists make the right decisions. Thank you for your contribution.



Anti-IKK beta IKBKB Antibody

For Research Use Only. Not for use in diagnostic procedures.