

Anti-KLF4 Antibody (C-term)

Catalog Number: A00120-2

About KLF4

KLF4 is a transcription factor which acts as both an activator and repressor. Binds the CACCC core sequence. Binds to multiple sites in the 5'-flanking region of its own gene and can activate its own transcription. Required for establishing the barrier function of the skin and for postnatal maturation and maintenance of the ocular surface. Involved in the differentiation of epithelial cells and may also function in skeletal and kidney development.

Overview

Product Name	Anti-KLF4 Antibody (C-term)
Reactive Species	Human
Description	Boster Bio Anti-KLF4 Antibody (C-term) (Catalog # A00120-2). Tested in WB, Flow Cytometry, IF application(s). This antibody reacts with Human.
Application	Flow Cytometry, IF, WB
Clonality	Polyclonal
Formulation	Purified polyclonal antibody supplied in PBS with 0.09% (W/V) sodium azide.
Storage Instructions	Maintain refrigerated at 2-8°C for up to 2 weeks. For long-term storage, store at -20°C in small aliquots to prevent freeze-thaw cycles.
Host	Rabbit
Uniprot ID	O43474

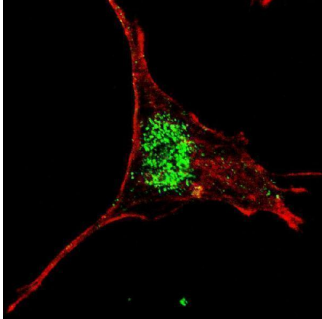
Technical Details

Immunogen	This KLF4 antibody is generated from rabbits immunized with a KLH conjugated synthetic peptide between 394-421 amino acids from the C-terminal region of human KLF4.
Predicted Reactive Species	Monkey
Recommended Detection Systems	Boster recommends Enhanced Chemiluminescent Kit with anti-Rabbit IgG (EK1002) for Western blot, and HRP Conjugated anti-Rabbit IgG Super Vision Assay Kit (SV0002-1) for IHC(P).
Cross Reactivity	No cross reactivity with other proteins.
Isotype	Rabbit IgG
Form	Liquid
Purification	This antibody is prepared by Saturated Ammonium Sulfate (SAS) precipitation followed by dialysis against PBS.

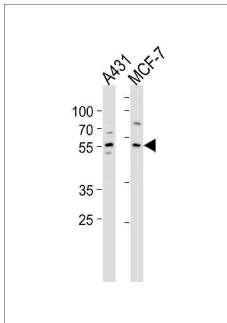
Suggested Dilutions

IF: 1:10-1:50
WB: 1:1000
FC: 1:10-1:50

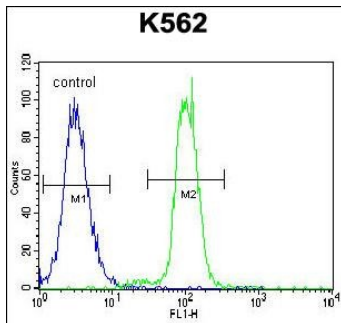
Anti-KLF4 Antibody (C-term) (A00120-2) Images



Fluorescent confocal image of SY5Y cells stained with A00120-2 KLF4 (C-term) antibody. SY5Y cells were fixed with 4% PFA (20 min), permeabilized with Triton X-100 (0.2%, 30 min), then incubated with A00120-2 KLF4 (C-term) primary antibody (1:200, 2 h at room temperature). For secondary antibody, Alexa Fluor® 488 conjugated donkey anti-rabbit antibody (green) was used (1:1000, 1h). Cytoplasmic actin was counterstained with Alexa Fluor® 555 (red) conjugated Phalloidin (5.25 uM, 25 min). KLF4 immunoreactivity is localized very specifically to the nuclei of the SY5Y cells.



KLF4 Antibody (C-term) western blot analysis in A431, MCF-7 cell line lysates (35ug/lane). This demonstrates the KLF4 antibody detected the KLF4 protein (arrow).



KLF4 Antibody (C-term) flow cytometric analysis of K562 cells (right histogram) compared to a negative control cell (left histogram). FITC-conjugated goat-anti-rabbit secondary antibodies were used for the analysis.

Submit a product review to Biocompare.com

Submit a review of this product to Biocompare.com to receive a \$20 Amazon.com giftcard! Your reviews help your fellow scientists make the right decisions. Thank you for your contribution.



Anti-KLF4 Antibody (C-term)

For Research Use Only. Not for use in diagnostic procedures.