

Anti-MLH1 (S467) Antibody

Catalog Number: A00126S467

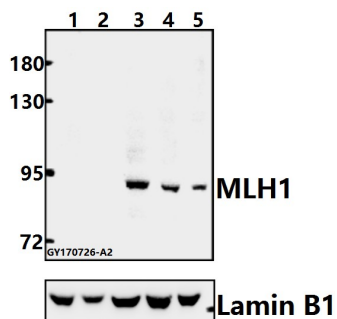
Overview

Product Name	Anti-MLH1 (S467) Antibody
Reactive Species	Human
Description	Boster Bio Anti-MLH1 (S467) Antibody catalog # A00126S467. Tested in WB,IF applications. This antibody reacts with Human.
Application	IF, WB
Clonality	Polyclonal
Formulation	Rabbit IgG, 1mg/ml in PBS with 0.02% sodium azide, 50% glycerol, pH7.2
Storage Instructions	Store at -20°C for one year. For short term storage and frequent use, store at 4°C for up to one month. Avoid repeated freeze-thaw cycles.
Host	Rabbit
Uniprot ID	P40692

Technical Details

Immunogen	Synthetic peptide, corresponding to amino acids 450-500 of Human MLH1.
Cross Reactivity	No cross reactivity with other proteins.
Isotype	IgG
Form	Liquid
Concentration	0.5-1mg/ml, actual concentration vary by lot. Use suggested dilution ratio to decide dilution procedure.
Purification	The antibody was affinity-purified from rabbit antiserum by affinity-chromatography using epitope-specific immunogen and the purity is > 95% (by SDS-PAGE).
Suggested Dilutions	WB: 1:500-1:1000 IF: 1:50-1:200

Anti-MLH1 (S467) Antibody (A00126S467) Images



Western blot (WB) analysis of MLH1 (S467) pAb at 1:500 dilution Lane1:PC12 whole cell lysate(40ug) Lane2:BV2 whole cell lysate(40ug) Lane3:PC3 whole cell lysate(40ug) Lane4:A549 whole cell lysate(40ug) Lane5:MCF-7 whole cell lysate(40ug)

Submit a product review to Biocompare.com

Submit a review of this product to Biocompare.com to receive a \$20 Amazon.com giftcard! Your reviews help your fellow scientists make the right decisions. Thank you for your contribution.



Anti-MLH1 (S467) Antibody

For Research Use Only. Not for use in diagnostic procedures.