

Anti-Toll-like receptor 2 TLR2 Antibody

Catalog Number: A00131-1

About TLR2

Toll-like receptors (TLRs) are signaling molecules that recognize different microbial products during infection and serve as an important link between the innate and adaptive immune responses. These proteins act through adaptor molecules such as MyD88 and TIRAP to activate various kinases and transcription factors such as Protein Kinase C (PKC) alpha/beta and NF-kappaB. TLR2 can form heterodimers with either TLR1 or TLR6, and as a heterodimer can recognize a variety of bacterial and mycoplasma lipoproteins respectively.

Overview

Product Name	Anti-Toll-like receptor 2 TLR2 Antibody
Reactive Species	Human, Mouse
Description	Boster Bio Anti-Toll-like receptor 2 TLR2 Antibody (Catalog # A00131-1). Tested in ELISA, WB, IHC-P, IF applications. This antibody reacts with Human, Mouse.
Application	ELISA, IF, IHC-P, WB
Clonality	Polyclonal
Formulation	TLR2 Antibody is supplied in PBS containing 0.02% sodium azide.
Storage Instructions	TLR2 antibody can be stored at 4°C for three months and -20°C, stable for up to one year. Avoid repeated freeze-thaw cycles. Antibodies should not be exposed to prolonged high temperatures.
Host	Rabbit
Uniprot ID	O60603

Technical Details

Immunogen	TLR2 antibody was raised against a peptide corresponding to 14 amino acids near the amino terminus of human TLR2. The immunogen is located within the first 50 amino acids of TLR2.
Predicted Reactive Species	Guinea Pig, Mouse
Cross Reactivity	This polyclonal antibody has no cross response to IKKa or IKKy.
Isotype	IgG
Form	Liquid
Concentration	1 mg/mL
Purification	TLR2 Antibody is affinity chromatography purified via peptide column.
Suggested Dilutions	Dilute the sample so that the expected range of concentrations fall within the detection range of this

kit.

If the expected range of concentration is unknown, a pilot test should be conducted to decide the optimal dilution ratio for your samples.

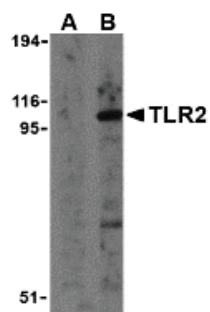
Some PubMed article(s) citing the expression level of this target are as follows:

Boster Bio's internal QC testing used:

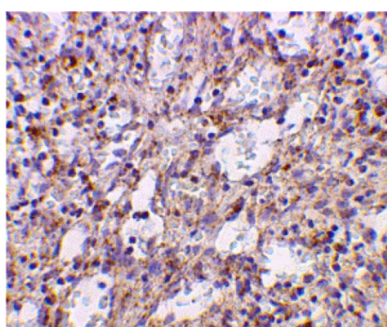
TLR2 antibody can be used for detection of TLR2 by Western blot at 1 ug/mL. Despite its predicted molecular weight, TLR2 runs at ~100 kDa in SDS-PAGE. This polyclonal antibody can also detect TLR2 by immunohistochemistry at 2 ug/mL. For immunofluorescence start at 10 ug/mL.

Antibody validated: Western Blot in mouse samples; Immunohistochemistry in human samples and Immunofluorescence in human samples. All other applications and species not yet tested. Optimal dilutions for each application should be determined by the researcher.

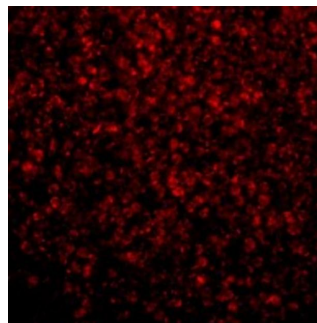
Anti-Toll-like receptor 2 TLR2 Antibody (A00131-1) Images



Western blot analysis of TLR2 in A20 cell lysates with TLR2 antibody at 1 ug/mL in the presence (A) and absence (B) of its blocking peptide.



Immunohistochemical staining of human spleen cells using TLR2 antibody at 2 ug/mL.



Immunofluorescence of TLR2 in Human Spleen tissue with TLR2 antibody at 10 ug/mL.

1 Publications Citing This Product

1. PubMed ID: 32801828, Feng S, Ju L, Shao Z, Grzanna M, Jia L, Liu M. Therapeutic Effect of C-C Chemokine Receptor Type 1 (CCR1) Antagonist BX471 on Allergic Rhinitis. J Inflamm Res. 2020 Jul 21;13:343-356. doi:10.2147/JIR.S254717. PMID: 32801828; PMCID: PMC7398876.

Visit bosterbio.com/anti-toll-like-receptor-2-tlr2-antibody-a00131-1-boster.html to see all 1 publications.

Submit a product review to Biocompare.com

Submit a review of this product to Biocompare.com to receive a \$20 Amazon.com giftcard! Your reviews help your fellow scientists make the right decisions. Thank you for your contribution.



Anti-Toll-like receptor 2 TLR2 Antibody