

Anti-Toll-like receptor 2 TLR2 Antibody

Catalog Number: A00131-3

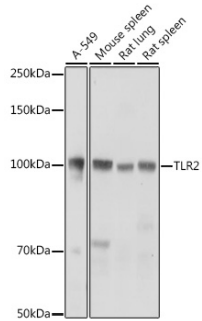
Overview

Product Name	Anti-Toll-like receptor 2 TLR2 Antibody
Reactive Species	Human, Mouse, Rat
Description	Boster Bio Anti-Toll-like receptor 2 TLR2 Antibody catalog # A00131-3. Tested in WB,ICC/IF applications. This antibody reacts with Human,Mouse,Rat.
Application	IF, ICC, WB
Clonality	Polyclonal
Formulation	Rabbit IgG, 1mg/ml in PBS with 0.02% sodium azide, 50% glycerol, pH7.2
Storage Instructions	Store at -20°C for one year. For short term storage and frequent use, store at 4°C for up to one month. Avoid repeated freeze-thaw cycles.
Host	Rabbit
Uniprot ID	O60603

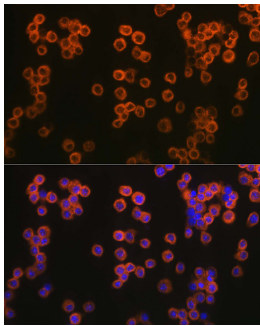
Technical Details

Immunogen	Recombinant fusion protein containing a sequence corresponding to amino acids 636-784 of human TLR2 (NP_003255.2).
Cross Reactivity	No cross reactivity with other proteins.
Isotype	IgG
Form	Liquid
Concentration	1 mg/ml
Purification	ProA affinity purified
Suggested Dilutions	WB: 1:500-1:1000 ICC/IF: 1:50-1:200

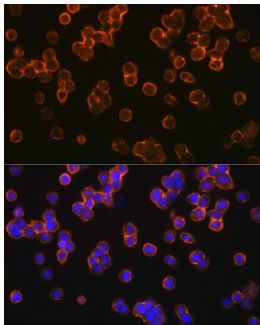
Anti-Toll-like receptor 2 TLR2 Antibody (A00131-3) Images



Western blot analysis of extracts of various cell lines, using TLR2 antibody at 1:1000 dilution.



Immunofluorescence analysis of Raw264 7 cells using TLR2 pAb at dilution of 1:200 (40x lens).



Immunofluorescence analysis of U937 cells using TLR2 pAb at dilution of 1:200 (40x lens).

1 Publications Citing This Product

1. PubMed ID: 32801828, Feng S, Ju L, Shao Z, Grzanna M, Jia L, Liu M. Therapeutic Effect of C-C Chemokine Receptor Type 1 (CCR1) Antagonist BX471 on Allergic Rhinitis. *J Inflamm Res.* 2020 Jul 21;13:343-356. doi:10.2147/JIR.S254717. PMID: 32801828; PMCID: PMC7398876.

Visit bosterbio.com/anti-toll-like-receptor-2-tlr2-antibody-a00131-3-boster.html to see all 1 publications.

Submit a product review to Biocompare.com

Submit a review of this product to Biocompare.com to receive a \$20 Amazon.com giftcard! Your reviews help your fellow scientists make the right decisions. Thank you for your contribution.



Anti-Toll-like receptor 2 TLR2 Antibody

For Research Use Only. Not for use in diagnostic procedures.