

## Anti-Transcriptional repressor CTCF CTCF Antibody

Catalog Number: A00132

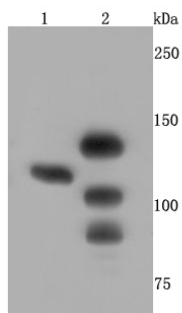
### Overview

Product Name	Anti-Transcriptional repressor CTCF CTCF Antibody
Reactive Species	Human, Mouse, Rat, Zebrafish
Description	Boster Bio Anti-Transcriptional repressor CTCF CTCF Antibody catalog # A00132. Tested in WB,ICC/IF,IHC,IP applications. This antibody reacts with Human,Mouse,Rat,Zebrafish.
Application	IP, IF, IHC, ICC, WB
Clonality	Polyclonal
Formulation	Rabbit IgG, 1mg/ml in PBS with 0.02% sodium azide, 50% glycerol, pH7.2
Storage Instructions	Store at -20°C for one year. For short term storage and frequent use, store at 4°C for up to one month. Avoid repeated freeze-thaw cycles.
Host	Rabbit
Uniprot ID	P49711

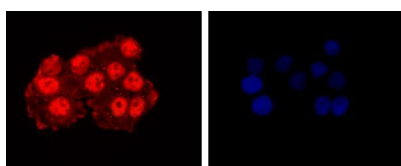
### Technical Details

Immunogen	recombinant protein
Cross Reactivity	No cross reactivity with other proteins.
Isotype	IgG
Form	Liquid
Concentration	1 mg/ml
Purification	ProA affinity purified
Suggested Dilutions	WB: 1:500-1:1,000 ICC: 1:100-1:500 IHC: 1:50-1:200 IP: 1:50-1:100

## Anti-Transcriptional repressor CTCF CTCF Antibody (A00132) Images



Western blot analysis of CTCF on different cell lysates using anti-CTCF antibody at 1/500 dilution. Positive control: Lane 1: 293T Lane 2: MCF-7



ICC staining CTCF in HeLa cells (red). The nuclear counterstain is DAPI (blue). Cells were fixed in paraformaldehyde, permeabilised with 0.25% Triton X100/PBS.

### Submit a product review to [Biocompare.com](https://www.biocompare.com)

Submit a review of this product to [Biocompare.com](https://www.biocompare.com) to receive a \$20 Amazon.com giftcard! Your reviews help your fellow scientists make the right decisions. Thank you for your contribution.



Anti-Transcriptional repressor CTCF CTCF Antibody

For Research Use Only. Not for use in diagnostic procedures.