

Anti-ABL1 Antibody Picoband®

Catalog Number: A00133-1

About ABL1

c Abl is also called as ABL1. This gene is a protooncogene that encodes a protein tyrosine kinase involved in a variety of cellular processes, including cell division, adhesion, differentiation, and response to stress. The activity of the protein is negatively regulated by its SH3 domain, whereby deletion of the region encoding this domain results in an oncogene. The ubiquitously expressed protein has DNA-binding activity that is regulated by CDC2-mediated phosphorylation, suggesting a cell cycle function. This gene has been found fused to a variety of translocation partner genes in various leukemias, most notably the t(9;22) translocation that results in a fusion with the 5' end of the breakpoint cluster region gene. Alternative splicing of this gene results in two transcript variants, which contain alternative first exons that are spliced to the remaining common exons.

Overview

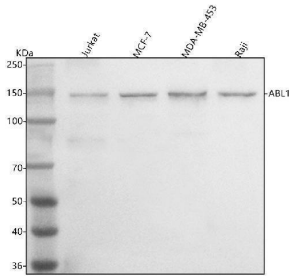
Product Name	Anti-ABL1 Antibody Picoband®
Reactive Species	Human, Mouse, Rat
Description	Boster Bio Anti-ABL1 Antibody Picoband® catalog # A00133-1. Tested in WB, ICC/IF, FCM, ELISA applications. This antibody reacts with Human, Mouse, Rat. The brand Picoband indicates this is a premium antibody that guarantees superior quality, high affinity, and strong signals with minimal background in Western blot applications. Only our best-performing antibodies are designated as Picoband, ensuring unmatched performance.
Application	ELISA, Flow Cytometry, IF, ICC, WB
Clonality	Polyclonal
Formulation	Each vial contains 4 mg Trehalose, 0.9 mg NaCl, 0.2 mg Na ₂ HPO ₄ .
Storage Instructions	At -20°C for one year from date of receipt. After reconstitution, at 4°C for one month. It can also be aliquotted and stored frozen at -20°C for six months. Avoid repeated freezing and thawing.
Host	Rabbit
Uniprot ID	P00519

Technical Details

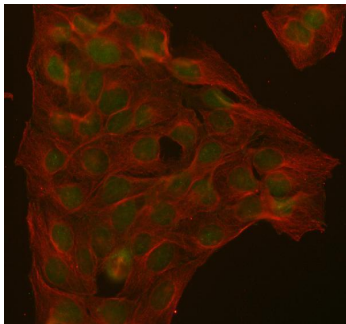
Immunogen	E.coli-derived human ABL1 recombinant protein (Position: L1012-Q1049). Human ABL1 shares 97.4% amino acid (aa) sequence identity with mouse ABL1.
Recommended Detection Systems	Boster recommends Enhanced Chemiluminescent Kit with anti-Rabbit IgG (EK1002) for Western blot, and HRP Conjugated anti-Rabbit IgG Super Vision Assay Kit (SV0002-1) for ICC.
Form	Lyophilized
Concentration	Adding 0.2 ml of distilled water will yield a concentration of 500 µg/ml.

Purification	Immunogen affinity purified.
Suggested Dilutions	Western blot, 0.25-0.5 ug/ml, Human Immunocytochemistry/Immunofluorescence, 5 ug/ml, Human Flow Cytometry (Fixed), 1-3 ug/1x10 ⁶ cells, Human, Mouse, Rat ELISA, 0.1-0.5 ug/ml, -

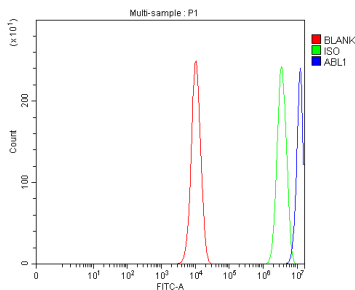
Anti-ABL1 Antibody Picoband® (A00133-1) Images



Western blot analysis of ABL1 using anti-ABL1 antibody (A00133-1). Electrophoresis was performed on a 5-20% SDS-PAGE gel at 70V (Stacking gel) / 90V (Resolving gel) for 2-3 hours. The sample well of each lane was loaded with 30 ug of sample under reducing conditions. Lane 1: human Jurkat whole cell lysates, Lane 2: human MCF-7 whole cell lysates, Lane 3: human MDA-MB-453 whole cell lysates, Lane 4: human Raji whole cell lysates. After electrophoresis, proteins were transferred to a nitrocellulose membrane at 150 mA for 50-90 minutes. Blocked the membrane with 5% non-fat milk/TBS for 1.5 hour at RT. The membrane was incubated with rabbit anti-ABL1 antigen affinity purified polyclonal antibody (Catalog # A00133-1) at 0.5 ug/mL overnight at 4°C, then washed with TBS-0.1%Tween 3 times with 5 minutes each and probed with a goat anti-rabbit IgG-HRP secondary antibody at a dilution of 1:5000 for 1.5 hour at RT. The signal is developed using an Enhanced Chemiluminescent detection (ECL) kit (Catalog # EK1002) with Tanon 5200 system. A specific band was detected for ABL1 at approximately 143 kDa. The expected band size for ABL1 is at 133 kDa.

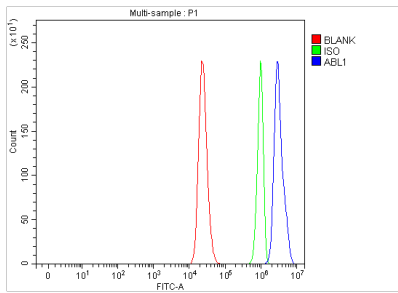


IF analysis of ABL1 using anti-ABL1 antibody (A00133-1) and anti-Beta Tubulin antibody (M01857-3). ABL1 was detected in immunocytochemical section of U2OS cell. Enzyme antigen retrieval was performed using IHC enzyme antigen retrieval reagent (AR0022) for 15 mins. The cells were blocked with 10% goat serum. And then incubated with 5 ug/mL rabbit anti-ABL1 Antibody (A00133-1) and mouse anti-Beta Tubulin antibody (M01857-3) overnight at 4°C. DyLight®488 Conjugated Goat Anti-Rabbit IgG (BA1127) and DyLight®550 Conjugated Goat Anti-Mouse IgG (BA1133) were used as secondary antibody at 1:500 dilution and incubated for 30 minutes at 37°C. Visualize using a fluorescence microscope and filter sets appropriate for the label used.

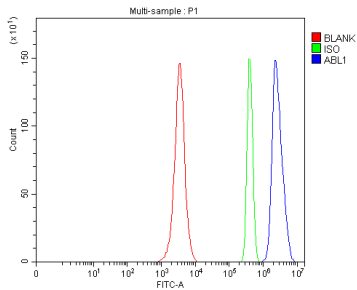


Flow Cytometry analysis of PC-3 cells using anti-ABL1 antibody (A00133-1). Overlay histogram showing PC-3 cells stained with A00133-1 (Blue line). To facilitate intracellular staining, cells were fixed with 4% paraformaldehyde and permeabilized with permeabilization buffer. The cells were blocked with 10% normal goat serum. And then incubated with rabbit anti-ABL1 Antibody (A00133-1, 1 ug/1x10⁶ cells) for 30 min at 20°C. DyLight®488 conjugated goat anti-rabbit IgG (BA1127, 5-10 ug/1x10⁶ cells) was used as secondary antibody for 30 minutes at 20°C. Isotype control antibody (Green line) was rabbit IgG (1 ug/1x10⁶) used under the same conditions. Unlabelled sample (Red line) was also used as a control.

Flow Cytometry analysis of PC-12 cells using anti-ABL1



antibody (A00133-1). Overlay histogram showing PC-12 cells stained with A00133-1 (Blue line). To facilitate intracellular staining, cells were fixed with 4% paraformaldehyde and permeabilized with permeabilization buffer. The cells were blocked with 10% normal goat serum. And then incubated with rabbit anti-ABL1 Antibody (A00133-1, 1 ug/1x10⁶ cells) for 30 min at 20°C. DyLight®488 conjugated goat anti-rabbit IgG (BA1127, 5-10 ug/1x10⁶ cells) was used as secondary antibody for 30 minutes at 20°C. Isotype control antibody (Green line) was rabbit IgG (1 ug/1x10⁶) used under the same conditions. Unlabelled sample (Red line) was also used as a control.



Flow Cytometry analysis of RAW264.7 cells using anti-ABL1 antibody (A00133-1). Overlay histogram showing RAW264.7 cells stained with A00133-1 (Blue line). To facilitate intracellular staining, cells were fixed with 4% paraformaldehyde and permeabilized with permeabilization buffer. The cells were blocked with 10% normal goat serum. And then incubated with rabbit anti-ABL1 Antibody (A00133-1, 1 ug/1x10⁶ cells) for 30 min at 20°C. DyLight®488 conjugated goat anti-rabbit IgG (BA1127, 5-10 ug/1x10⁶ cells) was used as secondary antibody for 30 minutes at 20°C. Isotype control antibody (Green line) was rabbit IgG (1 ug/1x10⁶) used under the same conditions. Unlabelled sample (Red line) was also used as a control.

Submit a product review to [Biocompare.com](https://www.biocompare.com)

Submit a review of this product to [Biocompare.com](https://www.biocompare.com) to receive a \$20 Amazon.com giftcard! Your reviews help your fellow scientists make the right decisions. Thank you for your contribution.



Anti-ABL1 Antibody

For Research Use Only. Not for use in diagnostic procedures.