

Anti-eIF4E (Phospho-S209) Antibody

Catalog Number: A00135S209-1

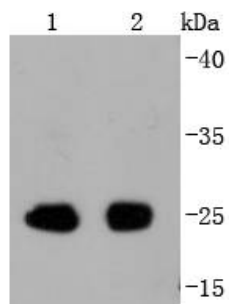
Overview

Product Name	Anti-eIF4E (Phospho-S209) Antibody
Reactive Species	Human, Mouse, Rat
Description	Boster Bio Anti-eIF4E (Phospho-S209) Antibody catalog # A00135S209-1. Tested in WB,ICC,IHC,IP applications. This antibody reacts with Human,Mouse,Rat.
Application	IP, IHC, ICC, WB
Clonality	Polyclonal
Formulation	Rabbit IgG, 1mg/ml in PBS with 0.02% sodium azide, 50% glycerol, pH7.2
Storage Instructions	Store at -20°C for one year. For short term storage and frequent use, store at 4°C for up to one month. Avoid repeated freeze-thaw cycles.
Host	Rabbit
Uniprot ID	P06730

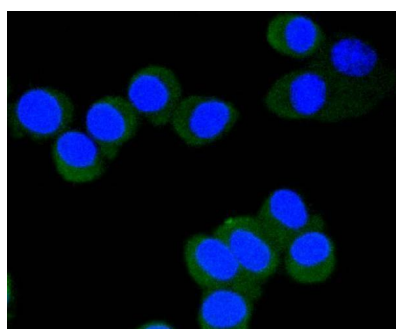
Technical Details

Immunogen	Synthetic phospho-peptide corresponding to residues surrounding Ser209 of human eIF4E.
Cross Reactivity	No cross reactivity with other proteins.
Isotype	IgG
Form	Liquid
Concentration	1 mg/ml
Purification	ProA affinity purified
Suggested Dilutions	WB: 1:1,000-1:5,000 ICC: 1:50-1:200 IHC: 1:50-1:200

Anti-eIF4E (Phospho-S209) Antibody (A00135S209-1) Images



Western blot analysis of Phospho-eIF4E(S209) on different lysates using anti-Phospho-eIF4E(S209) antibody at 1/1,000 dilution. Positive control: Lane 1: Mouse spleen Lane 2: Rat spleen



ICC staining Phospho-eIF4E(S209) in N2A cells (green). The nuclear counter stain is DAPI (blue). Cells were fixed in paraformaldehyde, permeabilised with 0.25% Triton X100/PBS.

Submit a product review to [Biocompare.com](https://www.biocompare.com)

Submit a review of this product to [Biocompare.com](https://www.biocompare.com) to receive a \$20 Amazon.com giftcard! Your reviews help your fellow scientists make the right decisions. Thank you for your contribution.



Anti-eIF4E (Phospho-S209) Antibody

For Research Use Only. Not for use in diagnostic procedures.