

Anti-Phospho-Cyclin D1 (T286) CCND1 Antibody

Catalog Number: A00149T286-1

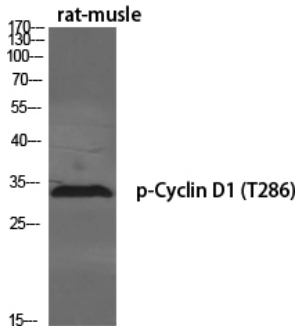
Overview

Product Name	Anti-Phospho-Cyclin D1 (T286) CCND1 Antibody
Reactive Species	Human, Mouse, Rat
Description	Boster Bio Anti-Phospho-Cyclin D1 (T286) CCND1 Antibody catalog # A00149T286-1. Tested in WB, IHC, IF, ELISA applications. This antibody reacts with Human, Mouse, Rat.
Application	ELISA, IF, IHC, WB
Clonality	Polyclonal
Formulation	Liquid in PBS containing 50% glycerol, 0.5% stabilizing protein and 0.02% sodium azide. *This antibody is supplied in a stabilized formulation. Compatibility with conjugation reactions depends on the chemistry of the conjugation method used. For conjugation methods that are not compatible with the stabilizing components present in this formulation, a carrier-free antibody format is required.
Storage Instructions	Store at -20°C for one year. For short term storage and frequent use, store at 4°C for up to one month. Avoid repeated freeze-thaw cycles.
Host	Rabbit
Uniprot ID	P24385

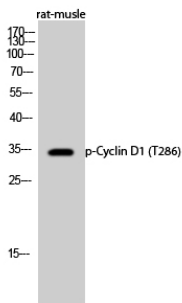
Technical Details

Immunogen	The antiserum was produced against synthesized peptide derived from human Cyclin D1 around the phosphorylation site of Thr286. AA range:246-295
Cross Reactivity	No cross reactivity with other proteins.
Isotype	IgG
Form	Liquid
Concentration	1 mg/ml
Purification	The antibody was affinity-purified from rabbit antiserum by affinity-chromatography using epitope-specific immunogen.
Suggested Dilutions	WB 1:500-1:2000 IHC 1:100-1:300 ELISA 1:10000 IF 1:50-200

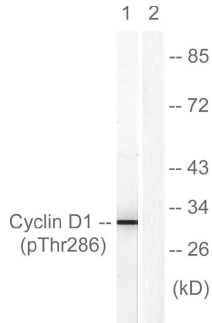
Anti-Phospho-Cyclin D1 (T286) CCND1 Antibody (A00149T286-1) Images



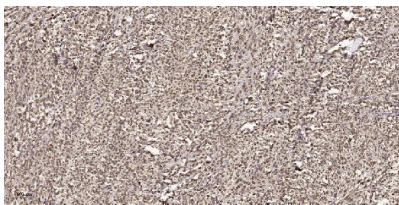
Western Blot analysis of various cells using Phospho-Cyclin D1 (T286) Polyclonal Antibody diluted at 1:500



Western Blot analysis of rat-muscle cells using Phospho-Cyclin D1 (T286) Polyclonal Antibody diluted at 1:500



Western blot analysis of lysates from Jurkat cells treated with EGF 200ng/ml 30', using Cyclin D1 (Phospho-Thr286) Antibody. The lane on the right is blocked with the phospho peptide.



Immunohistochemical analysis of paraffin-embedded human small intestinal carcinoma tissue. 1, primary Antibody was diluted at 1:200 (4° overnight). 2, Sodium citrate pH 6.0 was used for antigen retrieval (>98°C, 20min). 3, Secondary antibody was diluted at 1:200

2 Publications Citing This Product

1. PubMed ID: 33289736, Liu S, Sun Y, Zhao R, Wang Y, Zhang W, Pang W. Isoleucine increases muscle mass through promoting myogenesis and intramyocellular fat deposition. *Food Funct.* 2021 Jan 7;12(1):144-153. doi: 10.1039/d0fo02156c. Epub 2020 Dec 8. PMID:33289736.
2. PubMed ID: 33292254, Wang C, Shao S, Deng L, Wang S, Zhang Y. LncRNA SNHG12 regulates the radiosensitivity of cervical cancer through the miR-148a/CDK1 pathway. *Cancer Cell Int.* 2020 Dec 1;20(1):554. doi:10.1186/s12935-020-01654-5. PMID:33292254; PMCID: PMC7708190.

Visit [bosterbio.com/anti-phospho-cyclin-d1-t286-ccnd1-antibody-a00149t286-1-boster.html](https://www.bosterbio.com/anti-phospho-cyclin-d1-t286-ccnd1-antibody-a00149t286-1-boster.html) to see all 2 publications.

Submit a product review to Biocompare.com

Submit a review of this product to Biocompare.com to receive a \$20 Amazon.com giftcard! Your reviews help your fellow scientists make the right decisions. Thank you for your contribution.



Anti-Phospho-Cyclin D1 (T286) CCND1 Antibody

For Research Use Only. Not for use in diagnostic procedures.