

Anti-SHP-2 (S350) PTPN11 Antibody

Catalog Number: A00150S350

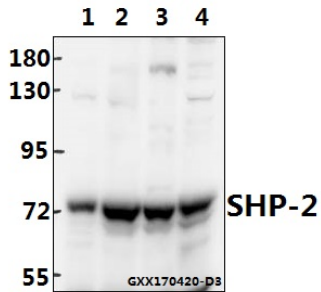
Overview

Product Name	Anti-SHP-2 (S350) PTPN11 Antibody
Reactive Species	Human, Mouse, Rat
Description	Boster Bio Anti-SHP-2 (S350) PTPN11 Antibody catalog # A00150S350. Tested in WB,IHC applications. This antibody reacts with Human,Mouse,Rat.
Application	IHC, WB
Clonality	Polyclonal
Formulation	Rabbit IgG, 1mg/ml in PBS with 0.02% sodium azide, 50% glycerol, pH7.2
Storage Instructions	Store at -20°C for one year. For short term storage and frequent use, store at 4°C for up to one month. Avoid repeated freeze-thaw cycles.
Host	Rabbit
Uniprot ID	Q06124

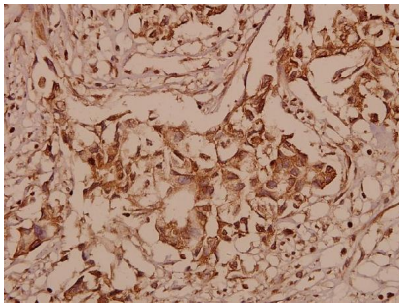
Technical Details

Immunogen	Synthetic peptide, corresponding to amino acids 320-370 of Human SHP-2.
Cross Reactivity	No cross reactivity with other proteins.
Isotype	IgG
Form	Liquid
Concentration	1 mg/ml
Purification	The antibody was affinity-purified from rabbit antiserum by affinity-chromatography using epitope-specific immunogen and the purity is > 95% (by SDS-PAGE).
Suggested Dilutions	WB: 1:500-1:1000 IHC: 1:50-1:200

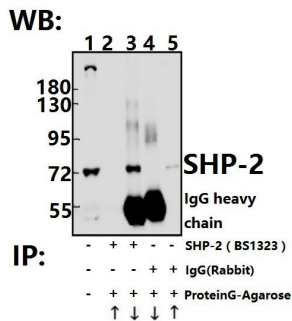
Anti-SHP-2 (S350) PTPN11 Antibody (A00150S350) Images



Western blot (WB) analysis of SHP-2 (K536) polyclonal antibody at 1:500 dilution Lane1:MCF-7 whole cell lysate(40ug) Lane2:A549 whole cell lysate(40ug) Lane3:CT26 whole cell lysate(40ug) Lane4:PC12 whole cell lysate(40ug)



Immunohistochemistry (IHC) analyzes of SHP-2 (S350) pAb in paraffin-embedded human breast carcinoma tissue at 1:50.



Immunoprecipitation of L02 cell lysate using SHP-2 (S350) pAb (Sepharose Bead Conjugate) #BD0048(lane 2 and lane 3) and Nonspecific IgG Control (Sepharose Bead Conjugate)#BD0047 (lane 4 and lane 5) .Lane 1 is 30% input. The western blot was probed using SHP-2 (S350) pAb #BS1323. "↑"supernatant; "↓"deposition

Submit a product review to Biocompare.com

Submit a review of this product to Biocompare.com to receive a \$20 Amazon.com giftcard! Your reviews help your fellow scientists make the right decisions. Thank you for your contribution.



Anti-SHP-2 (S350) PTPN11 Antibody

For Research Use Only. Not for use in diagnostic procedures.