

Anti-SHP2 (Phospho-Y542) PTPN11 Antibody

Catalog Number: A00150Y542-1

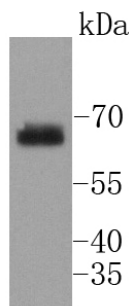
Overview

Product Name	Anti-SHP2 (Phospho-Y542) PTPN11 Antibody
Reactive Species	Human, Mouse
Description	Boster Bio Anti-SHP2 (Phospho-Y542) PTPN11 Antibody catalog # A00150Y542-1. Tested in WB,ICC,IP applications. This antibody reacts with Human,Mouse.
Application	IP, ICC, WB
Clonality	Polyclonal
Formulation	Rabbit IgG, 1mg/ml in PBS with 0.02% sodium azide, 50% glycerol, pH7.2
Storage Instructions	Store at -20°C for one year. For short term storage and frequent use, store at 4°C for up to one month. Avoid repeated freeze-thaw cycles.
Host	Rabbit
Uniprot ID	Q06124

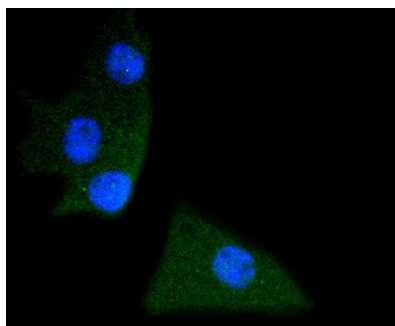
Technical Details

Immunogen	Synthetic phospho-peptide corresponding to residues surrounding Tyr542 of human SHP2.
Cross Reactivity	No cross reactivity with other proteins.
Isotype	IgG
Form	Liquid
Concentration	1 mg/ml
Purification	ProA affinity purified
Suggested Dilutions	WB: 1:1,000 ICC: 1:50-1:200

Anti-SHP2 (Phospho-Y542) PTPN11 Antibody (A00150Y542-1) Images



Western blot analysis of phospho -SHP2(Y542) on NIH/3T3 lysates using anti- phospho -SHP2(Y542) antibody at 1/1,000 dilution.



ICC staining phospho -SHP2(Y542) in B-6F1 cells (green). The nuclear counter stain is DAPI (blue). Cells were fixed in paraformaldehyde, permeabilised with 0.25% Triton X100/PBS.

Submit a product review to [Biocompare.com](https://www.biocompare.com)

Submit a review of this product to [Biocompare.com](https://www.biocompare.com) to receive a \$20 Amazon.com giftcard! Your reviews help your fellow scientists make the right decisions. Thank you for your contribution.



Anti-SHP2 (Phospho-Y542) PTPN11 Antibody

For Research Use Only. Not for use in diagnostic procedures.