

Anti-PTK2 (phospho-S722) Antibody

Catalog Number: A00151S722

About PTK2

Participates in DNA repair and in chromosomal DNA replication.

Kesti T., J. Biol. Chem. 268:10238-10245(1993).

Syvaeoja J.E.;Submitted (JUN-1998) to the EMBL/GenBank/DDBJ databases.

Asahara H., Submitted (FEB-1996) to the EMBL/GenBank/DDBJ databases.

Overview

Product Name	Anti-PTK2 (phospho-S722) Antibody
Reactive Species	Human, Rat
Description	Boster Bio Anti-PTK2 (phospho-S722) Antibody catalog # A00151S722. Tested in WB applications. This antibody reacts with Human,Rat.
Application	WB
Clonality	Polyclonal
Formulation	Rabbit IgG, 1mg/ml in PBS with 0.02% sodium azide, 50% glycerol, pH7.2
Storage Instructions	Store at -20°C for one year. For short term storage and frequent use, store at 4°C for up to one month. Avoid repeated freeze-thaw cycles.
Host	Rabbit
Uniprot ID	Q05397

Technical Details

Immunogen	Synthesized peptide derived from human SH-PTP2 around the phosphorylation site of Y580.
Predicted Reactive Species	Canine, Monkey
Cross Reactivity	No cross reactivity with other proteins.
Isotype	IgG
Form	Liquid
Concentration	1 mg/ml
Purification	The antibody was affinity-purified from rabbit antiserum by affinity-chromatography using epitope-specific immunogen and the purity is > 95% (by SDS-PAGE).

Suggested Dilutions

Dilute the sample so that the expected range of concentrations fall within the detection range of this kit.

If the expected range of concentration is unknown, a pilot test should be conducted to decide the optimal dilution ratio for your samples.

Some PubMed article(s) citing the expression level of this target are as follows:

Boster Bio's internal QC testing used:

WB: 1:500-1:1000

Anti-PTK2 (phospho-S722) Antibody (A00151S722) Images

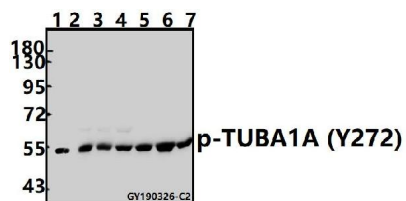


Figure 1. Western blotting validation for Anti-PTK2 (phospho-S722) Antibody A00151S722

Western blot (WB) analysis of PTK2 (phospho-S722)

polyclonal antibody at 1:500 dilution

Lane1:PC12 whole cell lysate(40ug)

Lane2:Panc1 whole cell lysate(40ug)

Lane3:EC9706 whole cell lysate(40ug)

Lane4:MCF-7 whole cell lysate(40ug)

Electrophoresis was performed on a SDS-PAGE gel. To determine SDS-PAGE gel concentration

Submit a product review to Biocompare.com

Submit a review of this product to Biocompare.com to receive a \$20 Amazon.com giftcard! Your reviews help your fellow scientists make the right decisions. Thank you for your contribution.



Anti-PTK2 (phospho-S722) Antibody