

Anti-CD192 CCR2 Antibody

Catalog Number: A00158-1

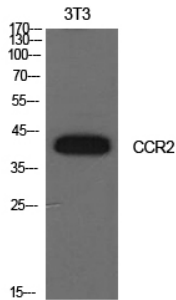
Overview

Product Name	Anti-CD192 CCR2 Antibody
Reactive Species	Human, Mouse, Rat
Description	Boster Bio Anti-CD192 CCR2 Antibody catalog # A00158-1. Tested in WB, ELISA applications. This antibody reacts with Human, Mouse, Rat.
Application	ELISA, WB
Clonality	Polyclonal
Formulation	Liquid in PBS containing 50% glycerol, 0.5% stabilizing protein and 0.02% sodium azide. *This antibody is supplied in a stabilized formulation. Compatibility with conjugation reactions depends on the chemistry of the conjugation method used. For conjugation methods that are not compatible with the stabilizing components present in this formulation, a carrier-free antibody format is required.
Storage Instructions	Store at -20°C for one year. For short term storage and frequent use, store at 4°C for up to one month. Avoid repeated freeze-thaw cycles.
Host	Rabbit
Uniprot ID	P41597

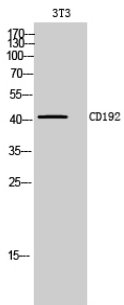
Technical Details

Immunogen	The antiserum was produced against synthesized peptide derived from the N-terminal region of human CCR2. AA range:1-50
Isotype	IgG
Form	Liquid
Concentration	1 mg/ml
Purification	Immunogen affinity purified
Suggested Dilutions	WB 1:500-1:2000 ELISA 1:10000

Anti-CD192 CCR2 Antibody (A00158-1) Images



Western Blot analysis of NIH-3T3 cells using CD192 Polyclonal Antibody. Secondary antibody was diluted at 1:20000



Western Blot analysis of 3T3 cells using CD192 Polyclonal Antibody. Secondary antibody was diluted at 1:20000

1 Publications Citing This Product

1. PubMed ID: 24416340, Zhao C, Bu X, Wang W, Ma T, Ma H. Plos One. 2014 Jan 8;9(1):E85058. Doi: 10.1371/Journal.Pone.0085058. Ecollection 2014. Gec-Derived Sfrp5 Inhibits Wnt5A-Induced Macrophage Chemotaxis And Activation.

Visit bosterbio.com/anti-cd192-antibody-a00158-1-boster.html to see all 1 publications.

Submit a product review to Biocompare.com

Submit a review of this product to Biocompare.com to receive a \$20 Amazon.com giftcard! Your reviews help your fellow scientists make the right decisions. Thank you for your contribution.



Anti-CD192 CCR2 Antibody

For Research Use Only. Not for use in diagnostic procedures.