

## Anti-PRC1 Antibody

Catalog Number: A00160

### About PRC1

PRC1 (Protein Regulator of Cytokinesis 1) is a key regulator of cytokinesis and has been identified as a substrate for several cyclin-dependent kinases (CDKs). High levels of PRC1 expression occurs during S and G2/M and drops dramatically after mitosis exit and G1 entry. It is located in the nucleus during interphase and binds to the midzone of mitotic spindles during anaphase and is localized to the cell midbody during cytokinesis. Depletion of PRC1 has been shown to prevent cellular cleavage, but it has no effect on nuclear division, demonstrating the importance of PRC1 in mitosis.

### Overview

Product Name	Anti-PRC1 Antibody
Reactive Species	Human, Mouse, Rat
Description	Boster Bio Anti-PRC1 Antibody (Catalog # A00160). Tested in ELISA, WB, IHC-P, IF applications. This antibody reacts with Human, Mouse, Rat.
Application	ELISA, IF, IHC-P, WB
Clonality	Polyclonal
Formulation	PRC1 Antibody is supplied in PBS containing 0.02% sodium azide.
Storage Instructions	PRC1 antibody can be stored at 4°C for three months and -20°C, stable for up to one year. Avoid repeated freeze-thaw cycles. Antibodies should not be exposed to prolonged high temperatures.
Host	Rabbit
Uniprot ID	O43663

### Technical Details

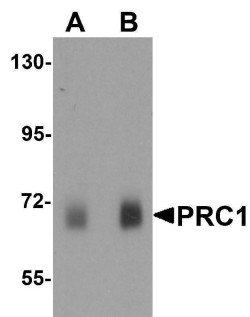
Immunogen	PRC1 antibody was raised against a 19 amino acid synthetic peptide near the center of human PRC1. The immunogen is located within amino acids 350 - 400 of PRC1.
Predicted Reactive Species	Bovine, Chicken
Cross Reactivity	At least three alternatively spliced transcript variants encoding distinct isoforms have been observed.
Isotype	IgG
Form	Liquid
Concentration	1 mg/mL
Purification	PRC1 Antibody is affinity chromatography purified via peptide column.

Suggested Dilutions

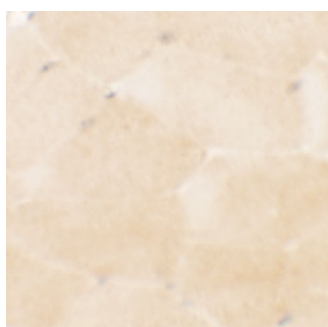
PRC1 antibody can be used for detection of Prc1 by Western blot at 0.5 - 1 ug/mL. Antibody can also be used for immunohistochemistry starting at 2.5 ug/mL. For immunofluorescence start at 2.5 ug/mL.

Antibody validated: Western Blot in human samples; Immunohistochemistry in mouse samples and Immunofluorescence in mouse samples. All other applications and species not yet tested. Optimal dilutions for each application should be determined by the researcher.

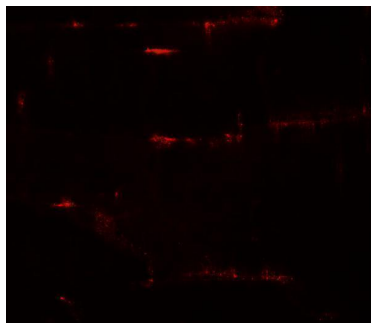
## Anti-PRC1 Antibody (A00160) Images



Western blot analysis of PRC1 in human skeletal muscle tissue lysate with Prc1 antibody at (A) 0.5 ug/ml and (B) 1 ug/mL.



Immunohistochemistry of PRC1 in mouse skeletal muscle tissue with PRC1 antibody at 2.5 ug/mL.



Immunofluorescence of PRC1 in mouse skeletal muscle tissue with PRC1 antibody at 20 ug/mL.

### Submit a product review to [Biocompare.com](https://www.biocompare.com)

Submit a review of this product to [Biocompare.com](https://www.biocompare.com) to receive a \$20 Amazon.com giftcard! Your reviews help your fellow scientists make the right decisions. Thank you for your contribution.



### Anti-PRC1 Antibody

For Research Use Only. Not for use in diagnostic procedures.