

## Anti-Cdk2 (Phospho-Y15) Antibody

Catalog Number: A00166Y15

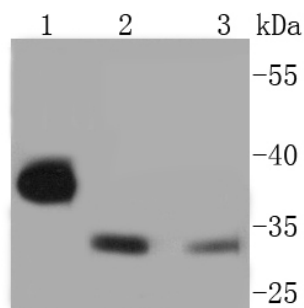
### Overview

Product Name	Anti-Cdk2 (Phospho-Y15) Antibody
Reactive Species	Human, Mouse, Rat
Description	Boster Bio Anti-Cdk2 (Phospho-Y15) Antibody catalog # A00166Y15. Tested in WB,IHC,IP applications. This antibody reacts with Human,Mouse,Rat.
Application	IP, IHC, WB
Clonality	Polyclonal
Formulation	Rabbit IgG, 1mg/ml in PBS with 0.02% sodium azide, 50% glycerol, pH7.2
Storage Instructions	Store at -20°C for one year. For short term storage and frequent use, store at 4°C for up to one month. Avoid repeated freeze-thaw cycles.
Host	Rabbit
Uniprot ID	P24941

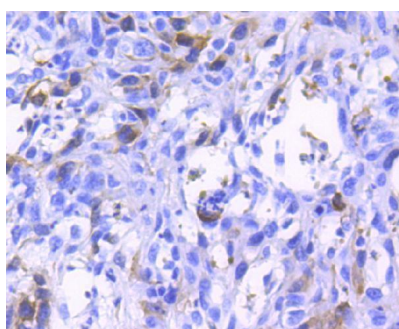
### Technical Details

Immunogen	Synthetic phospho-peptide corresponding to residues surrounding Tyr15 of human Cdk2.
Cross Reactivity	No cross reactivity with other proteins.
Isotype	IgG
Form	Liquid
Concentration	1 mg/ml
Purification	ProA affinity purified
Suggested Dilutions	WB: 1:1,000 IHC: 1:50-1:200

## Anti-Cdk2 (Phospho-Y15) Antibody (A00166Y15) Images



Western blot analysis of Phospho-Cdk2(Y15) on different lysates using anti-Phospho-Cdk2(Y15) antibody at 1/1,000 dilution. Positive control: Lane 1: Hela Lane 2: Mouse spleen Lane 3: NIH/3T3



Immunohistochemical analysis of paraffin-embedded human breast carcinoma tissue using anti-Phospho-Cdk2(Y15) antibody. Counter stained with hematoxylin.

### Submit a product review to [Biocompare.com](https://www.biocompare.com)

Submit a review of this product to [Biocompare.com](https://www.biocompare.com) to receive a \$20 Amazon.com giftcard! Your reviews help your fellow scientists make the right decisions. Thank you for your contribution.



Anti-Cdk2 (Phospho-Y15) Antibody

For Research Use Only. Not for use in diagnostic procedures.