

Anti-VISA MAVS Antibody

Catalog Number: A00169-2

About MAVS

Two distinct signaling pathways activate the host innate immunity against viral infection. One pathway is reliant on members of the Toll-like receptor (TLR) family while the other uses the RNA helicase RIG-I as a receptor for intracellular viral double-stranded RNA as a trigger for the immune response. VISA is a mitochondrial membrane protein that was identified as a critical component in the IFN- β signaling pathways that recruits IRF-3 to RIG-I, leading to its activation and that of NF- κ B. VISA is also thought to interact with other components of the innate immune pathway such as the TLR adapter protein TRIF, TRAF2 and TRAF6. VISA also interacts with the IKK α , IKK β and IKK ϵ kinases through its C-terminal region. Cleavage of this region by the Hepatitis C virus (HCV) protease allows HCV to escape the host immune system. At least three isoforms of VISA are known to exist.

Overview

Product Name	Anti-VISA MAVS Antibody
Reactive Species	Human, Mouse, Rat
Description	Boster Bio Anti-VISA MAVS Antibody (Catalog # A00169-2). Tested in ELISA, WB, IHC-P, IF applications. This antibody reacts with Human, Mouse, Rat.
Application	ELISA, IF, IHC-P, WB
Clonality	Polyclonal
Formulation	VISA Antibody is supplied in PBS containing 0.02% sodium azide.
Storage Instructions	VISA antibody can be stored at 4°C for three months and -20°C, stable for up to one year. Avoid repeated freeze-thaw cycles. Antibodies should not be exposed to prolonged high temperatures.
Host	Rabbit
Uniprot ID	Q7Z434

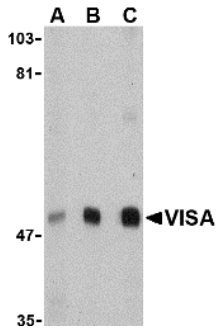
Technical Details

Immunogen	VISA antibody was raised against a 13 amino acid synthetic peptide from near the amino terminus of human VISA. The immunogen is located within the first 50 amino acids of VISA.
Predicted Reactive Species	Bovine, Pig
Isotype	IgG
Form	Liquid
Concentration	1 mg/mL
Purification	VISA Antibody is affinity chromatography purified via peptide column.

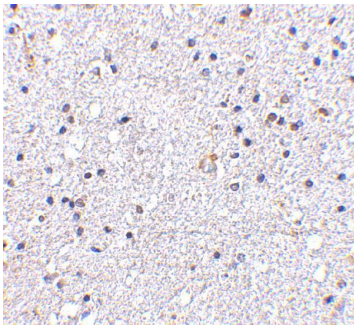
Suggested Dilutions

VISA antibody can be used for detection of VISA by Western blot at 0.5 - 2 ug/mL. Antibody can also be used for immunohistochemistry starting at 5 ug/mL. For immunofluorescence start at 20 ug/mL. Antibody validated: Western Blot in mouse samples; Immunohistochemistry in human samples and Immunofluorescence in human samples. All other applications and species not yet tested. Optimal dilutions for each application should be determined by the researcher.

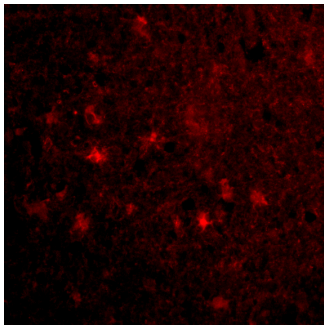
Anti-VISA MAVS Antibody (A00169-2) Images



Western blot analysis of VISA in A20 cell lysate with VISA antibody at (A) 0.5, (B) 1 and (C) 2 ug/mL.



Immunohistochemistry of VISA in human brain tissue with VISA antibody at 5 ug/mL.



Immunofluorescence of VISA in Human Brain cells with VISA antibody at 20 ug/mL.

Submit a product review to [Biocompare.com](https://www.biocompare.com)

Submit a review of this product to [Biocompare.com](https://www.biocompare.com) to receive a \$20 Amazon.com giftcard! Your reviews help your fellow scientists make the right decisions. Thank you for your contribution.



Anti-VISA MAVS Antibody

For Research Use Only. Not for use in diagnostic procedures.