

## Anti-PD-1 PDCD1 Antibody

Catalog Number: A00178-1

### About PDCD1

Cell-mediated immune responses are initiated by T lymphocytes that are themselves stimulated by cognate peptides bound to MHC molecules on antigen-presenting cells (APC). T-cell activation is generally self-limited as activated T cells express receptors such as PD-1 (also known as PDCD-1) that mediate inhibitory signals from the APC. PD-1 can bind two different but related ligands, PDL-1 and PDL-2. Upon binding to either of these ligands, signals generated by PD-1 inhibit the activation of the immune response in the absence of "danger signals" such as LPS or other molecules associated with bacteria or other pathogens. Evidence for this is seen in PD1-null mice who exhibit hyperactivated immune systems and autoimmune diseases.

### Overview

Product Name	Anti-PD-1 PDCD1 Antibody
Reactive Species	Human, Mouse, Rat
Description	Boster Bio Anti-PD-1 PDCD1 Antibody (Catalog # A00178-1). Tested in ELISA, WB, IHC-P, ICC, IF applications. This antibody reacts with Human, Mouse, Rat.
Application	ELISA, IF, IHC-P, ICC, WB
Clonality	Polyclonal
Formulation	PD-1 Antibody is supplied in PBS containing 0.02% sodium azide.
Storage Instructions	PD-1 antibody can be stored at 4°C for three months and -20°C, stable for up to one year. Avoid repeated freeze-thaw cycles. Antibodies should not be exposed to prolonged high temperatures.
Host	Rabbit
Uniprot ID	Q15116

### Technical Details

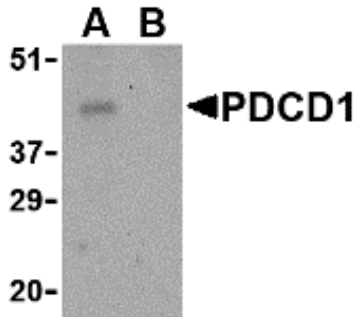
Immunogen	PD-1 antibody was raised against a 16 amino acid synthetic peptide from near the center of human PD-1. The immunogen is located within amino acids 120 - 170 of PD-1.
Predicted Reactive Species	Chicken, Pig
Isotype	IgG
Form	Liquid
Concentration	1 mg/mL
Purification	PD-1 Antibody is affinity chromatography purified via peptide column.

**Suggested Dilutions**

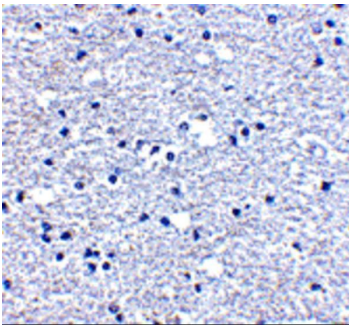
PD-1 antibody can be used for detection of PD-1 by Western blot at 1 ug/mL. Antibody can also be used for immunohistochemistry starting at 5 ug/mL and immunocytochemistry at 10 ug/mL. For immunofluorescence start at 10 ug/mL.

Antibody validated: Western Blot in human samples; Immunohistochemistry in human samples; Immunocytochemistry in human samples and Immunofluorescence in human samples. All other applications and species not yet tested. Optimal dilutions for each application should be determined by the researcher.

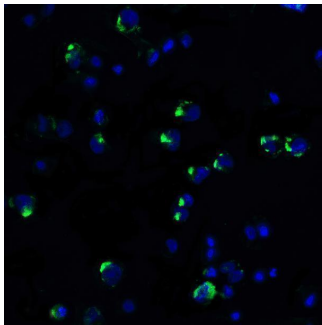
## Anti-PD-1 PDCD1 Antibody (A00178-1) Images



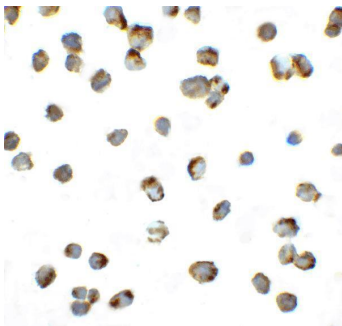
Western blot analysis of PD-1 in THP-1 cell lysate with PD-1 antibody at 1 ug/mL in the (A) absence and (B) presence of blocking peptide.



Immunohistochemistry of PD-1 in human brain tissue with PD-1 antibody at 5 ug/mL.



Immunofluorescence of PD-1 in PD-1-transfected HEK293 cells with PD-1 antibody at 20 ug/ml. Green: PD-1 Antibody (A00178-1) Blue: DAPI staining



Immunocytochemistry of PD-1 in PD-1-transfected HEK293 cells with PD-1 antibody at 10 ug/ml.

**Submit a product review to Biocompare.com**

Submit a review of this product to Biocompare.com to receive a \$20 Amazon.com giftcard! Your reviews help your fellow scientists make the right decisions. Thank you for your contribution.



Anti-PD-1 PDCD1 Antibody

For Research Use Only. Not for use in diagnostic procedures.