

## Anti-Bcl-X (S56) BCL2L1 Antibody

Catalog Number: A00181S56

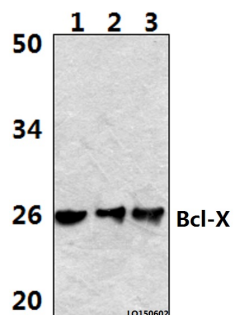
### Overview

Product Name	Anti-Bcl-X (S56) BCL2L1 Antibody
Reactive Species	Human, Mouse, Rat
Description	Boster Bio Anti-Bcl-X (S56) BCL2L1 Antibody catalog # A00181S56. Tested in WB,IHC applications. This antibody reacts with Human,Mouse,Rat.
Application	IHC, WB
Clonality	Polyclonal
Formulation	Rabbit IgG, 1mg/ml in PBS with 0.02% sodium azide, 50% glycerol, pH7.2
Storage Instructions	Store at -20°C for one year. For short term storage and frequent use, store at 4°C for up to one month. Avoid repeated freeze-thaw cycles.
Host	Rabbit
Uniprot ID	Q07817

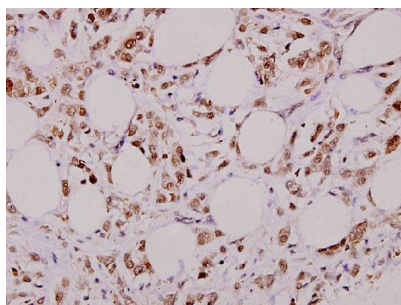
### Technical Details

Immunogen	Synthetic peptide, corresponding to amino acids 50-100 of Human Bcl-X.
Cross Reactivity	No cross reactivity with other proteins.
Isotype	IgG
Form	Liquid
Concentration	1 mg/ml
Purification	The antibody was affinity-purified from rabbit antiserum by affinity-chromatography using epitope-specific immunogen and the purity is > 95% (by SDS-PAGE).
Suggested Dilutions	WB: 1:500-1:1000 IHC: 1:50-1:150

## Anti-Bcl-X (S56) BCL2L1 Antibody (A00181S56) Images



Western blot (WB) analysis of Bcl-X (S56) polyclonal antibody at 1:500 dilution Lane1:Hela whole cell lysate(40ug) Lane2:Hela treated with H2O2 (100nmol/ml, 25min, phostop) whole cell lysate (40ug) Lane3:Hela treated with H2O2 (100nmol/ml, 25min, lambda-ppase) whole cell lysate (40ug)



Immunohistochemistry (IHC) analyzes of Bcl-X (S56) pAb in paraffin-embedded human breast carcinoma tissue at 1:100.

### Submit a product review to Biocompare.com

Submit a review of this product to Biocompare.com to receive a \$20 Amazon.com giftcard! Your reviews help your fellow scientists make the right decisions. Thank you for your contribution.



Anti-Bcl-X (S56) BCL2L1 Antibody

For Research Use Only. Not for use in diagnostic procedures.