

## Anti-Phospho-Bcl-x (T47) BCL2L1 Antibody

Catalog Number: A00181T47-1

### About BCL2L1

Anti cdk2 antibody recognizes a protein encoded by a gene member of the Ser/Thr protein kinase family. This protein kinase is highly similar to the gene products of *S. cerevisiae* cdc28, and *S. pombe* cdc2. It is a catalytic subunit of the cyclin-dependent protein kinase complex, whose activity is restricted to the G1-S phase, and essential for cell cycle G1/S phase transition. This protein associates with and regulated by the regulatory subunits of the complex including cyclin A or E, CDK inhibitor p21Cip1 (CDKN1A) and p27Kip1 (CDKN1B). Its activity is also regulated by its protein phosphorylation. Two alternatively spliced variants and multiple transcription initiation sites of this gene have been reported.

### Overview

Product Name	Anti-Phospho-Bcl-x (T47) BCL2L1 Antibody
Reactive Species	Human, Mouse, Rat
Description	Boster Bio Anti-Phospho-Bcl-x (T47) BCL2L1 Antibody catalog # A00181T47-1. Tested in ELISA, IF, IHC, WB applications. This antibody reacts with Human, Mouse, Rat.
Application	ELISA, IF, IHC, WB
Clonality	Polyclonal
Formulation	Liquid in PBS containing 50% glycerol, 0.5% BSA and 0.02% sodium azide.
Storage Instructions	Store at -20°C for one year. For short term storage and frequent use, store at 4°C for up to one month. Avoid repeated freeze-thaw cycles.
Host	Rabbit
Uniprot ID	Q07817

### Technical Details

Immunogen	Synthesized peptide derived from human Bcl-x around the phosphorylation site of T47.
Predicted Reactive Species	Canine, Monkey
Cross Reactivity	No cross reactivity with other proteins.
Isotype	IgG
Form	Liquid
Concentration	1 mg/ml
Purification	The antibody was affinity-purified from rabbit antiserum by affinity-chromatography using epitope-specific immunogen.

**Suggested Dilutions**

Dilute the sample so that the expected range of concentrations fall within the detection range of this kit.

If the expected range of concentration is unknown, a pilot test should be conducted to decide the optimal dilution ratio for your samples.

Some PubMed article(s) citing the expression level of this target are as follows:

Boster Bio's internal QC testing used:

WB 1:500-1:2000

IHC 1:100-1:300

IF 1:200-1:1000

ELISA 1:40000

## Anti-Phospho-Bcl-x (T47) BCL2L1 Antibody (A00181T47-1) Images

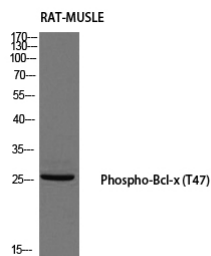


Figure 1. Western blotting validation for Anti-Phospho-Bcl-x (T47) BCL2L1 Antibody A00181T47-1

Western Blot (WB) analysis of Rat Muscle using Phospho-Bcl-x (T47) antibody.

Electrophoresis was performed on a SDS-PAGE gel. To determine SDS-PAGE gel concentration

## Submit a product review to Biocompare.com

Submit a review of this product to Biocompare.com to receive a \$20 Amazon.com giftcard! Your reviews help your fellow scientists make the right decisions. Thank you for your contribution.



Anti-Phospho-Bcl-x (T47) BCL2L1 Antibody