

Anti-PLK1 (Phospho-T210) Antibody

Catalog Number: A00182T210-1

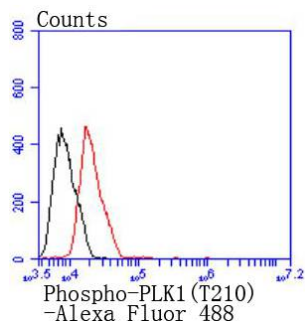
Overview

Product Name	Anti-PLK1 (Phospho-T210) Antibody
Reactive Species	Human
Description	Boster Bio Anti-PLK1 (Phospho-T210) Antibody catalog # A00182T210-1. Tested in WB,ICC/IF,Flow Cytometry applications. This antibody reacts with Human.
Application	Flow Cytometry, IF, ICC, WB
Clonality	Polyclonal
Formulation	Rabbit IgG, 1mg/ml in PBS with 0.02% sodium azide, 50% glycerol, pH7.2
Storage Instructions	Store at -20°C for one year. For short term storage and frequent use, store at 4°C for up to one month. Avoid repeated freeze-thaw cycles.
Host	Rabbit
Uniprot ID	P53350

Technical Details

Immunogen	Synthetic phospho-peptide corresponding to residues surrounding Thr210 of human PLK1.
Cross Reactivity	No cross reactivity with other proteins.
Isotype	IgG
Form	Liquid
Concentration	1 mg/ml
Purification	ProA affinity purified
Suggested Dilutions	WB: 1:500-1:1,000 FC: 1:10-1:50 ICC: 1:10-1:50

Anti-PLK1 (Phospho-T210) Antibody (A00182T210-1) Images



Flow cytometric analysis of MCF-7 cells with Phospho-PLK1(T210) antibody at 1/50 dilution (red) compared with an unlabelled control (cells without incubation with primary antibody; black). Alexa Fluor 488-conjugated goat anti rabbit IgG was used as the secondary antibody.

Submit a product review to Biocompare.com

Submit a review of this product to Biocompare.com to receive a \$20 Amazon.com giftcard! Your reviews help your fellow scientists make the right decisions. Thank you for your contribution.



Anti-PLK1 (Phospho-T210) Antibody

For Research Use Only. Not for use in diagnostic procedures.