

Anti-Flt3/Cd135 Antibody

Catalog Number: A00188-1

About FLT3

Important regulator of cell cycle progression. Involved in G1 arrest. Potent inhibitor of cyclin E- and cyclin A-CDK2 complexes. Positive regulator of cyclin D-dependent kinases such as CDK4. Regulated by phosphorylation and degradation events.

Le XF, et al. (2003) J Biol Chem.

Connor MK, et al. (2003) Mol Biol Cell; 14(1): 201-13.

McAllister SS, et al. (2003) Mol Cell Biol; 23(1): 216-28.

Chopra S, et al. (2002) J Biol Chem; 277(36): 32413-6.

Boehm M, et al. (2002) EMBO J; 21(13): 3390-401.

Overview

Product Name	Anti-Flt3/Cd135 Antibody
Reactive Species	Human, Mouse
Description	Boster Bio Anti-Flt3/Cd135 Antibody catalog # A00188-1. Tested in ELISA, WB applications. This antibody reacts with Human, Mouse.
Application	ELISA, WB
Clonality	Polyclonal
Formulation	Liquid in PBS containing 50% glycerol, 0.5% BSA and 0.02% sodium azide.
Storage Instructions	Store at -20°C for one year. For short term storage and frequent use, store at 4°C for up to one month. Avoid repeated freeze-thaw cycles.
Host	Rabbit
Uniprot ID	P36888

Technical Details

Immunogen	Synthesized peptide derived from human Flt3 around the non-phosphorylation site of Y599.
Predicted Reactive Species	Bovine, Canine, Equine, Guinea Pig, Pig
Isotype	IgG
Form	Liquid
Concentration	1 mg/ml
Purification	Immunogen affinity purified

Suggested Dilutions

Dilute the sample so that the expected range of concentrations fall within the detection range of this kit.

If the expected range of concentration is unknown, a pilot test should be conducted to decide the optimal dilution ratio for your samples.

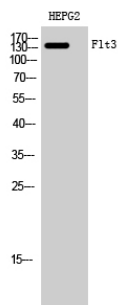
Some PubMed article(s) citing the expression level of this target are as follows:

Boster Bio's internal QC testing used:

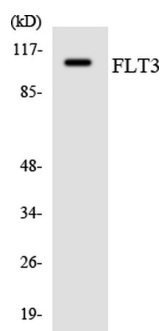
WB, 1:500-1:2000

ELISA 1:20000

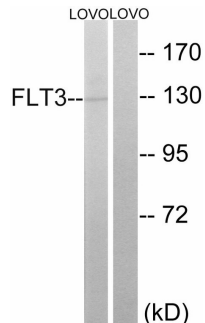
Anti-Flt3/Cd135 Antibody (A00188-1) Images



Western blot analysis of HEPG2 cells using Flt3 Polyclonal Antibody diluted at 1:1000



Western blot analysis of the lysates from K562 cells using FLT3 antibody.



Western blot analysis of lysates from LOVO cells, using FLT3 Antibody. The lane on the right is blocked with the synthesized peptide.

Submit a product review to Biocompare.com

Submit a review of this product to Biocompare.com to receive a \$20 Amazon.com giftcard! Your reviews help your fellow scientists make the right decisions. Thank you for your contribution.



Anti-Flt3/Cd135 Antibody