

Anti-Argonaute 2 AGO2 Antibody

Catalog Number: A00189-1

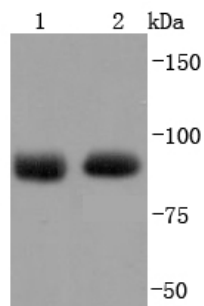
Overview

Product Name	Anti-Argonaute 2 AGO2 Antibody
Reactive Species	Human, Mouse, Rat
Description	Boster Bio Anti-Argonaute 2 AGO2 Antibody catalog # A00189-1. Tested in WB,ICC/IF,IHC,IP,Flow Cytometry applications. This antibody reacts with Human,Mouse,Rat.
Application	Flow Cytometry, IP, IF, IHC, ICC, WB
Clonality	Polyclonal
Formulation	Rabbit IgG, 1mg/ml in PBS with 0.02% sodium azide, 50% glycerol, pH7.2
Storage Instructions	Store at -20°C for one year. For short term storage and frequent use, store at 4°C for up to one month. Avoid repeated freeze-thaw cycles.
Host	Rabbit
Uniprot ID	Q9UKV8

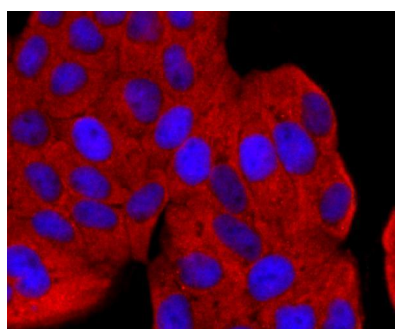
Technical Details

Immunogen	recombinant protein
Cross Reactivity	No cross reactivity with other proteins.
Isotype	IgG
Form	Liquid
Concentration	1 mg/ml
Purification	ProA affinity purified
Suggested Dilutions	WB: 1:1,000-1:2,000 ICC: 1:50-1:200 IHC: 1:50-1:200 FC: 1:50-1:100

Anti-Argonaute 2 AGO2 Antibody (A00189-1) Images



Western blot analysis of Argonaute 2 on different lysates using anti-Argonaute 2 antibody at 1/1,000 dilution. Positive control: Lane 1: Hela Lane 2: MCF-7



ICC staining Argonaute 2 in Hela cells (red). The nuclear counter stain is DAPI (blue). Cells were fixed in paraformaldehyde, permeabilised with 0.25% Triton X100/PBS.

1 Publications Citing This Product

1. PubMed ID: 33177098, Xin X, Kumar V, Lin F, Kumar V, Bhattarai R, Bhatt VR, Tan C, Mahato RI. Redox-responsive nanoplatform for codelivery of miR-519c and gemcitabine for pancreatic cancer therapy. Sci Adv.2020 Nov 11;6(46):eabd6764.doi:10.1126/sciadv.abd6764.PMID:33177098.

Visit bosterbio.com/anti-argonaute-2-ago2-antibody-a00189-1-boster.html to see all 1 publications.

Submit a product review to Biocompare.com

Submit a review of this product to Biocompare.com to receive a \$20 Amazon.com giftcard! Your reviews help your fellow scientists make the right decisions. Thank you for your contribution.



Anti-Argonaute 2 AGO2 Antibody

For Research Use Only. Not for use in diagnostic procedures.