

Anti-TET2 Antibody

Catalog Number: A00191

About TET2

TET2, a member of the ten-eleven-translocation (TET) family of genes, is a methylcytosine dioxygenase that catalyzes the conversion of methylcytosine to 5-hydroxymethylcytosine. It is a candidate tumor suppressor gene reported to be mutated in approximately 14% of patients with JAK2V617F-positive myeloproliferative neoplasms, and can be mutated in other hematopoietic disorders such as myelodysplastic syndromes, acute myeloid leukemia, and chronic myelomonocytic leukemia. Analysis of the TET2 and JAK2 mutations in these neoplasms suggests that mutations in TET2 do not represent a predisposition for acquiring mutations in JAK2.

Overview

Product Name	Anti-TET2 Antibody
Reactive Species	Human
Description	Boster Bio Anti-TET2 Antibody (Catalog # A00191). Tested in ELISA, WB, IHC-P, IF applications. This antibody reacts with Human.
Application	ELISA, IF, IHC-P, WB
Clonality	Polyclonal
Formulation	TET2 Antibody is supplied in PBS containing 0.02% sodium azide.
Storage Instructions	TET2 antibody can be stored at 4°C for three months and -20°C, stable for up to one year. Avoid repeated freeze-thaw cycles. Antibodies should not be exposed to prolonged high temperatures.
Host	Rabbit
Uniprot ID	Q6N021

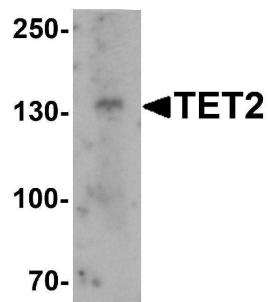
Technical Details

Immunogen	TET2 antibody was raised against an 18 amino acid synthetic peptide near the amino terminus of human TET2. The immunogen is located within amino acids 20 - 70 of TET2.
Predicted Reactive Species	Mouse
Cross Reactivity	At least two isoforms of TET2 are known to exist; this antibody will detect both isoforms.
Isotype	IgG
Form	Liquid
Concentration	1 mg/mL
Purification	TET2 Antibody is affinity chromatography purified via peptide column.

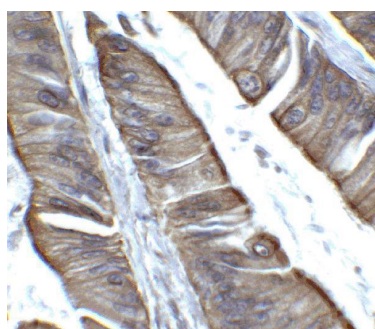
Suggested Dilutions

TET2 antibody can be used for detection of TET2 by Western blot at 1 ug/mL. Antibody can also be used for immunohistochemistry starting at 2 ug/mL. For immunofluorescence start at 20 ug/mL. Antibody validated: Western Blot in human samples; Immunohistochemistry in human samples and Immunofluorescence in human samples. All other applications and species not yet tested. Optimal dilutions for each application should be determined by the researcher.

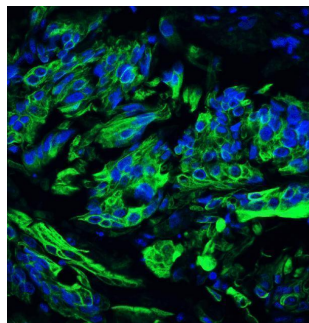
Anti-TET2 Antibody (A00191) Images



Western blot analysis of TET2 in SK-N-SH cell lysate with TET2 antibody at 1 ug/mL.



Immunohistochemistry of TET2 in human colon carcinoma tissue with TET2 antibody at 2 ug/ml.



Immunofluorescence of TET2 in human colon carcinoma tissue with TET2 antibody at 20 ug/ml. Green: TET2 Antibody (A00191) Blue: DAPI staining

Submit a product review to [Biocompare.com](https://www.biocompare.com)

Submit a review of this product to [Biocompare.com](https://www.biocompare.com) to receive a \$20 Amazon.com giftcard! Your reviews help your fellow scientists make the right decisions. Thank you for your contribution.



Anti-TET2 Antibody

For Research Use Only. Not for use in diagnostic procedures.