

## Anti-ITCH Antibody

Catalog Number: A00195

### About ITCH

The Itchy E3 ubiquitin protein ligase (ITCH) is a member of the Nedd4 family of HECT domain E3 ubiquitin ligases (1). HECT domain E3 ubiquitin ligases transfer ubiquitin from E2 ubiquitin-conjugating enzymes to protein substrates, thus targeting specific proteins for lysosomal degradation. ITCH plays a role in multiple cellular processes including erythroid and lymphoid cell differentiation and the regulation of immune responses (2). In B cells, ITCH is thought to associate with latent membrane protein 2A (LMP2A) of Epstein-Barr virus, specifically down-regulating its activity in B cell signaling (3). Mutations in this gene are a cause of syndromic multisystem autoimmune disease (4).

### Overview

Product Name	Anti-ITCH Antibody
Reactive Species	Human, Mouse, Rat
Description	Boster Bio Anti-ITCH Antibody (Catalog # A00195). Tested in ELISA, WB applications. This antibody reacts with Human, Mouse, Rat.
Application	ELISA, WB
Clonality	Polyclonal
Formulation	ITCH antibody is supplied in PBS containing 0.02% sodium azide.
Storage Instructions	ITCH antibody can be stored at 4°C for three months and -20°C, stable for up to one year.
Host	Rabbit
Uniprot ID	Q96J02

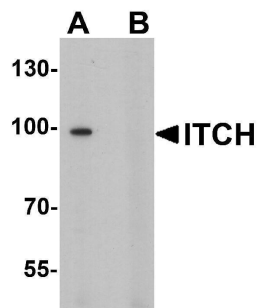
### Technical Details

Immunogen	ITCH antibody was raised against a 15 amino acid peptide near the amino terminus of human ITCH . The immunogen is located within amino acids 40 - 90 of ITCH.
Predicted Reactive Species	Mouse
Cross Reactivity	ITCH antibody is human, mouse and rat reactive. At least three isoforms of ITCH are known to exist; this antibody only recognizes the two longest isoforms. This antibody is predicted to not cross-react with other members of the Nedd4 protein family.
Isotype	IgG
Form	Liquid
Concentration	1 mg/mL
Purification	ITCH antibody is affinity chromatography purified via peptide column.

Suggested Dilutions

ITCH antibody can be used for detection of ITCH by Western blot at 1 - 2 ug/ml.  
Antibody validated: Western Blot in mouse samples. All other applications and species not yet tested. Optimal dilutions for each application should be determined by the researcher.

## Anti-ITCH Antibody (A00195) Images



Western blot analysis of ITCH in 3T3 cell lysate with ITCH antibody at 1 ug/ml in (A) the absence and (B) the presence of blocking peptide.

## Submit a product review to Biocompare.com

Submit a review of this product to Biocompare.com to receive a \$20 Amazon.com giftcard! Your reviews help your fellow scientists make the right decisions. Thank you for your contribution.



Anti-ITCH Antibody

For Research Use Only. Not for use in diagnostic procedures.