

Anti-CBP CREBBP Antibody

Catalog Number: A00205-1

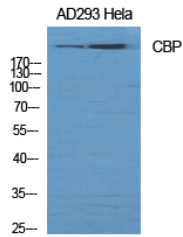
Overview

Product Name	Anti-CBP CREBBP Antibody
Reactive Species	Human, Mouse, Rat
Description	Boster Bio Anti-CBP CREBBP Antibody catalog # A00205-1. Tested in WB, IHC, IF, ELISA applications. This antibody reacts with Human, Mouse, Rat.
Application	ELISA, IF, IHC, WB
Clonality	Polyclonal
Formulation	Liquid in PBS containing 50% glycerol, 0.5% stabilizing protein and 0.02% sodium azide. *This antibody is supplied in a stabilized formulation. Compatibility with conjugation reactions depends on the chemistry of the conjugation method used. For conjugation methods that are not compatible with the stabilizing components present in this formulation, a carrier-free antibody format is required.
Storage Instructions	Store at -20°C for one year. For short term storage and frequent use, store at 4°C for up to one month. Avoid repeated freeze-thaw cycles.
Host	Rabbit
Uniprot ID	Q92793

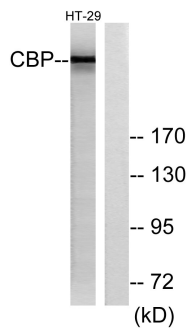
Technical Details

Immunogen	The antiserum was produced against synthesized peptide derived from human CBP. AA range:1501-1550
Isotype	IgG
Form	Liquid
Concentration	1 mg/ml
Purification	Immunogen affinity purified
Suggested Dilutions	WB 1:500-1:2000 IHC 1:100-1:300 IF 1:200-1:1000 ELISA 1:20000

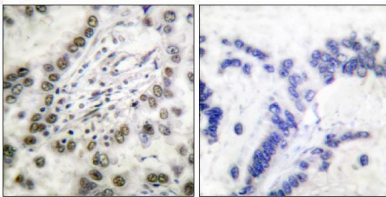
Anti-CBP CREBBP Antibody (A00205-1) Images



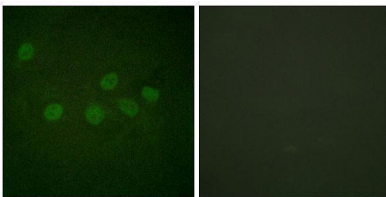
Western Blot analysis of various cells using CBP Polyclonal Antibody diluted at 1:1000



Western blot analysis of lysates from HT-29 cells, treated with calyculinA 50ng/ml 30', using CBP Antibody. The lane on the right is blocked with the synthesized peptide.



Immunohistochemistry analysis of paraffin-embedded human lung carcinoma tissue, using CBP Antibody. The picture on the right is blocked with the synthesized peptide.



Immunofluorescence analysis of HeLa cells, using CBP Antibody. The picture on the right is blocked with the synthesized peptide.

Submit a product review to [Biocompare.com](https://www.biocompare.com)

Submit a review of this product to [Biocompare.com](https://www.biocompare.com) to receive a \$20 Amazon.com giftcard! Your reviews help your fellow scientists make the right decisions. Thank you for your contribution.



Anti-CBP CREBBP Antibody

For Research Use Only. Not for use in diagnostic procedures.