

## Anti-IL-15 Antibody

Catalog Number: A00212

### About IL15

Interleukin 15 (IL-15) is a cytokine that regulates T and natural killer cell activation and proliferation. This cytokine and IL-2 share many biological activities as both have been found to bind common hematopoietin receptor subunits, and may compete for the same receptor, and thus negatively regulate each other's activity. The number of CD8+ memory cells is shown to be controlled by a balance between IL-15 and IL-2. This cytokine induces the activation of JAK kinases, as well as the phosphorylation and activation of transcription activators STAT3, STAT5, and STAT6. In mouse, studies suggest that IL-15 may increase the expression of apoptosis inhibitor Bcl-xL, possibly through the transcription activation activity of STAT6, and thus prevent apoptosis.

### Overview

Product Name	Anti-IL-15 Antibody
Reactive Species	Human, Mouse, Rat
Description	Boster Bio Anti-IL-15 Antibody (Catalog # A00212). Tested in ELISA, WB, IHC-P applications. This antibody reacts with Human, Mouse, Rat.
Application	ELISA, IHC-P, WB
Clonality	Polyclonal
Formulation	IL-15 Antibody is supplied in PBS containing 0.02% sodium azide.
Storage Instructions	IL-15 antibody can be stored at 4°C for three months and -20°C, stable for up to one year.
Host	Rabbit
Uniprot ID	P40933

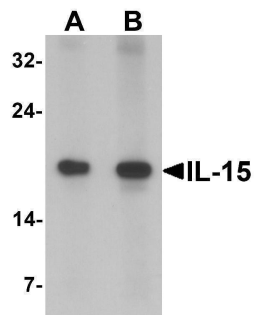
### Technical Details

Immunogen	Rabbit polyclonal IL-15 antibody was raised against a 13 amino acid peptide near the center of human IL-15. The immunogen is located within amino acids 50 - 100 of IL-15.
Predicted Reactive Species	Bovine, Guinea Pig, Pig, Rabbit, Sheep
Cross Reactivity	At least two isoforms of IL-15 are known to exist.
Isotype	IgG
Form	Liquid
Concentration	1 mg/mL
Purification	IL-15 Antibody is affinity chromatography purified via peptide column.

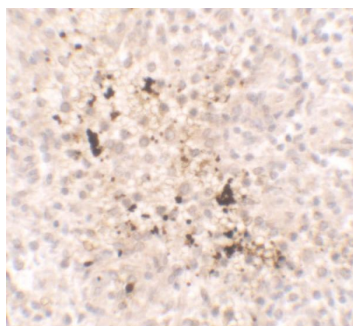
Suggested Dilutions

IL-15 antibody can be used for detection of IL-15 by Western blot at 1 - 2 ug/mL.  
Antibody validated: Western Blot in rat samples and Immunohistochemistry in human samples. All other applications and species not yet tested. Optimal dilutions for each application should be determined by the researcher.

## Anti-IL-15 Antibody (A00212) Images



Western blot analysis of IL-15 in rat spleen tissue lysate with IL-15 antibody at (A) 1 and (B) 2 ug/mL



Immunohistochemistry of IL-15 in human spleen tissue with IL-15 antibody at 2.5 ug/ml.

### Submit a product review to [Biocompare.com](https://www.biocompare.com)

Submit a review of this product to [Biocompare.com](https://www.biocompare.com) to receive a \$20 Amazon.com giftcard! Your reviews help your fellow scientists make the right decisions. Thank you for your contribution.



### Anti-IL-15 Antibody

For Research Use Only. Not for use in diagnostic procedures.