

Anti-IL15 Antibody

Catalog Number: A00212-2

About IL15

Interleukin (IL)-15 is a cytokine with the ability to stimulate the proliferation activity of Th1 and/or Th2 lymphocytes. This gene is mapped to human chromosome 4q31 by fluorescence in situ hybridization. IL-15 is a novel cytokine whose effects on T-cell activation and proliferation are similar to those of interleukin-2 (IL-2), presumably because IL-15 utilizes the beta and gamma chains of the IL-2 receptor. IL-15 can play a role in the initiation and outcome of acute and chronic rejection. Anti-IL-15 therapy in combination with classic immunosuppression therapy might be beneficial in the prevention of acute, and especially chronic, allograft rejection.

Overview

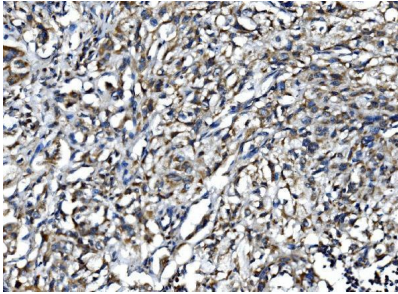
Product Name	Anti-IL15 Antibody
Reactive Species	Human, Rat
Description	Boster Bio Anti-IL15 Antibody catalog # A00212-2. Tested in ELISA, Flow Cytometry, IHC applications. This antibody reacts with Human, Rat.
Application	ELISA, Flow Cytometry, IHC
Clonality	Polyclonal
Formulation	Each vial contains 4mg Trehalose, 0.9mg NaCl, 0.2mg Na ₂ HPO ₄ , 0.005mg NaN ₃ .
Storage Instructions	Store at -20°C for one year from date of receipt. After reconstitution, at 4°C for one month. It can also be aliquotted and stored frozen at -20°C for six months. Avoid repeated freeze-thaw cycles.
Host	Rabbit
Uniprot ID	P40933

Technical Details

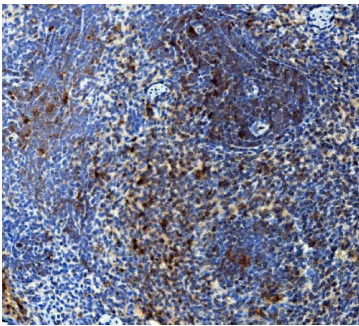
Immunogen	E.coli-derived human IL15 recombinant protein (Position: D70-S162).
Recommended Detection Systems	Boster recommends HRP Conjugated anti-Rabbit IgG Super Vision Assay Kit (SV0002-1) for IHC(P).
Cross Reactivity	No cross-reactivity with other proteins.
Isotype	Rabbit IgG
Form	Lyophilized
Concentration	Adding 0.2 ml of distilled water will yield a concentration of 500 ug/ml.
Purification	Immunogen affinity purified.
Suggested Dilutions	Immunohistochemistry (Paraffin-embedded Section), 2-5ug/ml, Human, Rat

Flow Cytometry (Fixed), 1-3ug/1x10⁶ cells, Human
ELISA, 0.1-0.5ug/ml, -

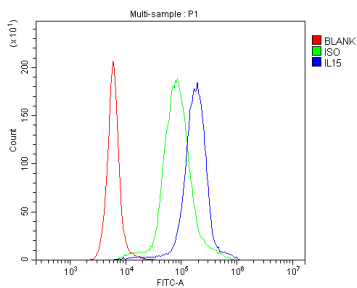
Anti-IL15 Antibody (A00212-2) Images



IHC analysis of IL15 using anti-IL15 antibody (A00212-2). IL15 was detected in paraffin-embedded section of human B lymphocytic tumor tissue. Heat mediated antigen retrieval was performed in EDTA buffer (pH8.0, epitope retrieval solution). The tissue section was blocked with 10% goat serum. The tissue section was then incubated with 2ug/ml rabbit anti-IL15 Antibody (A00212-2) overnight at 4°C. Biotinylated goat anti-rabbit IgG was used as secondary antibody and incubated for 30 minutes at 37°C. The tissue section was developed using Streptavidin-Biotin-Complex (SABC) (Catalog # SA1022) with DAB as the chromogen.



IHC analysis of IL15 using anti-IL15 antibody (A00212-2). IL15 was detected in paraffin-embedded section of rat spleen tissue. Heat mediated antigen retrieval was performed in EDTA buffer (pH8.0, epitope retrieval solution). The tissue section was blocked with 10% goat serum. The tissue section was then incubated with 2ug/ml rabbit anti-IL15 Antibody (A00212-2) overnight at 4°C. Biotinylated goat anti-rabbit IgG was used as secondary antibody and incubated for 30 minutes at 37°C. The tissue section was developed using Streptavidin-Biotin-Complex (SABC) (Catalog # SA1022) with DAB as the chromogen.



Flow Cytometry analysis of human PBMC cells using anti-IL15 antibody (A00212-2). Overlay histogram showing human PBMC cells stained with A00212-2 (Blue line). The cells were fixed with 4% paraformaldehyde and blocked with 10% normal goat serum. And then incubated with rabbit anti-IL15 Antibody (A00212-2, 1ug/1x10⁶ cells) for 30 min at 20°C. DyLight®488 conjugated goat anti-rabbit IgG (BA1127, 5-10ug/1x10⁶ cells) was used as secondary antibody for 30 minutes at 20°C. Isotype control antibody (Green line) was rabbit IgG (1ug/1x10⁶) used under the same conditions. Unlabelled sample without incubation with primary antibody and secondary antibody (Red line) was used as a blank control.

Submit a product review to Biocompare.com

Submit a review of this product to Biocompare.com to receive a \$20 Amazon.com giftcard! Your reviews help your fellow scientists make the right decisions. Thank you for your contribution.



Anti-IL15 Antibody

For Research Use Only. Not for use in diagnostic procedures.