

Anti-Synuclein Alpha (Phospho-S129) SNCA Antibody

Catalog Number: A00215S129-2

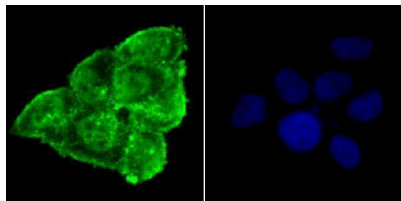
Overview

Product Name	Anti-Synuclein Alpha (Phospho-S129) SNCA Antibody
Reactive Species	Human, Mouse, Rat
Description	Boster Bio Anti-Synuclein Alpha (Phospho-S129) SNCA Antibody catalog # A00215S129-2. Tested in WB,ICC,IF,IHC applications. This antibody reacts with Human,Mouse,Rat.
Application	IF, IHC, ICC, WB
Clonality	Polyclonal
Formulation	Rabbit IgG, 1mg/ml in PBS with 0.02% sodium azide, 50% glycerol, pH7.2
Storage Instructions	Store at -20°C for one year. For short term storage and frequent use, store at 4°C for up to one month. Avoid repeated freeze-thaw cycles.
Host	Rabbit
Uniprot ID	P37840

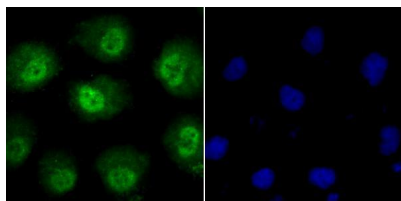
Technical Details

Immunogen	Synthetic phospho-peptide corresponding to residues surrounding Ser129 of human alpha Synuclein.
Cross Reactivity	No cross reactivity with other proteins.
Isotype	IgG
Form	Liquid
Concentration	1 mg/ml
Purification	ProA affinity purified
Suggested Dilutions	ICC: 1:50-1:200 IHC: 1:50-1:200 WB: 1:500

Anti-Synuclein Alpha (Phospho-S129) SNCA Antibody (A00215S129-2) Images



ICC staining Phospho-alpha Synuclein (S129) in HeLa cells (green). The nuclear counter stain is DAPI (blue). Cells were fixed in paraformaldehyde, permeabilised with 0.25% Triton X100/PBS.



ICC staining Phospho-alpha Synuclein (S129) in HUVEC cells (green). The nuclear counter stain is DAPI (blue). Cells were fixed in paraformaldehyde, permeabilised with 0.25% Triton X100/PBS.

Submit a product review to Biocompare.com

Submit a review of this product to Biocompare.com to receive a \$20 Amazon.com giftcard! Your reviews help your fellow scientists make the right decisions. Thank you for your contribution.



Anti-Synuclein Alpha (Phospho-S129) SNCA Antibody

For Research Use Only. Not for use in diagnostic procedures.