

Anti-LKB1 STK11 Antibody

Catalog Number: A00217

About STK11

The LKB1 serine/threonine protein kinase was initially identified as a tumor suppressor gene mutated in human Peutz-Jeghers syndrome (PJS), a condition resulting in the growth of numerous intestinal polyps classed as hamartomas. LKB1 exists as a heterotrimeric complex with two other proteins, Ste20-related adaptor protein (STRAD) and MO25. Together, this complex can phosphorylate and activate the AMP-activate protein kinase (AMPK). Following AMPK activation by LKB1, AMPK then phosphorylates TSC1 and TSC2, key components of the metabolism-regulating TOR signaling pathway, which antagonizes the activation for the TOR pathway. LKB1 has also been shown to play a fundamental role in controlling the spatial orientation of structures required to maintain an ordered, polarized epithelium.

Overview

Product Name	Anti-LKB1 STK11 Antibody
Reactive Species	Human, Mouse
Description	Boster Bio Anti-LKB1 STK11 Antibody (Catalog # A00217). Tested in ELISA, WB applications. This antibody reacts with Human, Mouse.
Application	ELISA, WB
Clonality	Polyclonal
Formulation	LKB1 Antibody is supplied in PBS containing 0.02% sodium azide.
Storage Instructions	LKB1 antibody can be stored at 4°C for three months and -20°C, stable for up to one year. Avoid repeated freeze-thaw cycles. Antibodies should not be exposed to prolonged high temperatures.
Host	Rabbit
Uniprot ID	Q15831

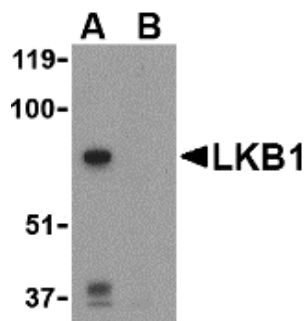
Technical Details

Immunogen	LKB1 antibody was raised against a 15 amino acid synthetic peptide from near the carboxy terminus of human LKB1. The immunogen is located within amino acids 310 - 360 of LKB1.
Predicted Reactive Species	Chicken, Rat
Isotype	IgG
Form	Liquid
Concentration	1 mg/mL
Purification	LKB1 Antibody is affinity chromatography purified via peptide column.

Suggested Dilutions

LKB1 antibody can be used for detection of LKB1 by Western blot at 1 ug/mL. LKB1 often migrates at a higher than expected molecular weight in SDS-PAGE.
Antibody validated: Western Blot in human samples. All other applications and species not yet tested. Optimal dilutions for each application should be determined by the researcher.

Anti-LKB1 STK11 Antibody (A00217) Images



Western blot analysis of LKB1 in PC-3 cell lysate with LKB1 antibody at 1 ug/mL in the (A) absence or (B) presence of blocking peptide.

Submit a product review to Biocompare.com

Submit a review of this product to Biocompare.com to receive a \$20 Amazon.com giftcard! Your reviews help your fellow scientists make the right decisions. Thank you for your contribution.



Anti-LKB1 STK11 Antibody

For Research Use Only. Not for use in diagnostic procedures.