

## Anti-GAPDH Antibody (C-term R248)

Catalog Number: A00227-2

### About GAPDH

GAPDH catalyzes an important energy-yielding step in carbohydrate metabolism, the reversible oxidative phosphorylation of glyceraldehyde-3-phosphate in the presence of inorganic phosphate and nicotinamide adenine dinucleotide (NAD). The enzyme exists as a tetramer of identical chains.

### Overview

Product Name	Anti-GAPDH Antibody (C-term R248)
Reactive Species	Human
Description	Boster Bio Anti-GAPDH Antibody (C-term R248) (Catalog # A00227-2). Tested in WB, IF, Flow Cytometry, IHC-P application(s). This antibody reacts with Human.
Application	Flow Cytometry, IF, IHC-P, WB
Clonality	Polyclonal
Formulation	Purified polyclonal antibody supplied in PBS with 0.09% (W/V) sodium azide.
Storage Instructions	Maintain refrigerated at 2-8°C for up to 2 weeks. For long-term storage, store at -20°C in small aliquots to prevent freeze-thaw cycles.
Host	Rabbit
Uniprot ID	P04406

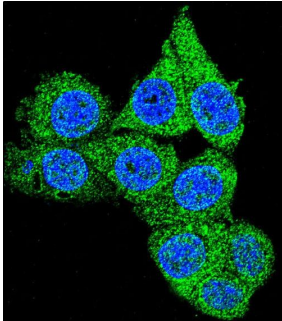
### Technical Details

Immunogen	This GAPDH antibody is generated from rabbits immunized with a KLH conjugated synthetic peptide between 233-259 amino acids from the C-terminal region of human GAPDH.
Predicted Reactive Species	Chicken, Mouse, Pig, Rat
Recommended Detection Systems	Boster recommends Enhanced Chemiluminescent Kit with anti-Rabbit IgG (EK1002) for Western blot, and HRP Conjugated anti-Rabbit IgG Super Vision Assay Kit (SV0002-1) for IHC(P).
Cross Reactivity	No cross reactivity with other proteins.
Isotype	Rabbit IgG
Form	Liquid
Purification	This antibody is prepared by Saturated Ammonium Sulfate (SAS) precipitation followed by dialysis against PBS.

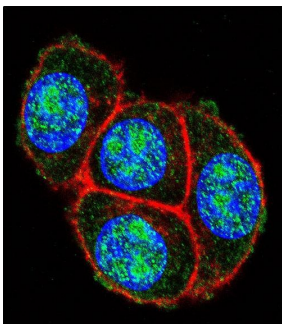
Suggested Dilutions

IF: 1:10-1:50  
WB: 1:1000  
IHC-P: 1:50-1:100  
FC: 1:10-1:50

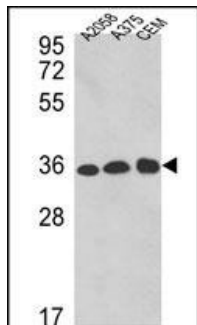
## Anti-GAPDH Antibody (C-term R248) (A00227-2) Images



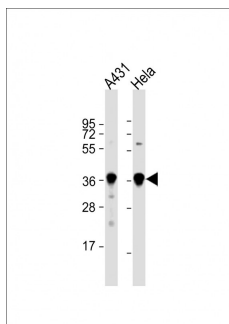
Confocal immunofluorescent analysis of GAPDH Antibody (C-term R248) with HeLa cells followed by Alexa Fluor 488-conjugated goat anti-rabbit IgG (green). DAPI was used to stain the cell nuclei (blue).



Confocal immunofluorescent analysis of GAPDH Antibody (C-term R248) with HeLa cells followed by Alexa Fluor 488-conjugated goat anti-rabbit IgG (green). Actin filaments have been labeled with Alexa Fluor 555 phalloidin (red). DAPI was used to stain the cell nuclei (blue).

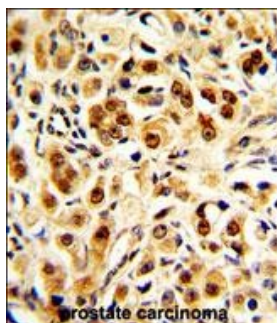
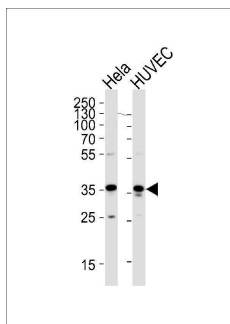


Western blot analysis of GAPDH Antibody (C-term R248) in A2058, A375, CEM cell line lysates (35ug/lane). GAPDH (arrow) was detected using the purified Pab.

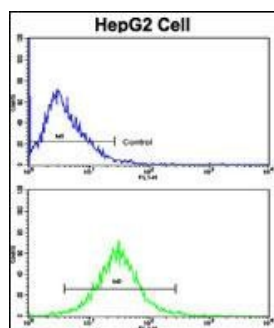


All lanes : Anti-GAPDH Antibody (C-term R248) at 1:1000 dilution  
Lane 1: A431 whole cell lysate  
Lane 2: HeLa whole cell lysate  
Lysates/proteins at 20 µg per lane. Secondary Goat Anti-Rabbit IgG, (H+L), Peroxidase conjugated at 1/10000 dilution. Predicted band size : 36 kDa  
Blocking/Dilution buffer: 5% NFDN/TBST.

Western blot analysis of lysates from HeLa, HUVEC cell line (from left to right), using GAPDH Antibody (C-term R248). A00227-2 was diluted at 1:1000 at each lane. A goat anti-rabbit IgG H&L(HRP) at 1:5000 dilution was used as the secondary antibody. Lysates at 35ug per lane.



Formalin-fixed and paraffin-embedded human prostate carcinoma with GAPDH Antibody (C-term R248), which was peroxidase-conjugated to the secondary antibody, followed by DAB staining. This data demonstrates the use of this antibody for immunohistochemistry; clinical relevance has not been evaluated.



Flow cytometric analysis of HepG2 cells using GAPDH Antibody (C-term R248)(bottom histogram) compared to a negative control cell (top histogram). FITC-conjugated goat-anti-rabbit secondary antibodies were used for the analysis.

## Submit a product review to Biocompare.com

Submit a review of this product to Biocompare.com to receive a \$20 Amazon.com giftcard! Your reviews help your fellow scientists make the right decisions. Thank you for your contribution.



Anti-GAPDH Antibody (C-term R248)

For Research Use Only. Not for use in diagnostic procedures.