

Anti-Tuberin TSC2 Antibody

Catalog Number: A00229

About TSC2

Tuberous sclerosis complex (TSC) is an autosomal dominant tumor syndrome caused by mutations in either of the TSC1 or TSC2 tumor suppressor genes. The products of these genes form a protein complex that indirectly decreases the signaling of the mammalian Target of Rapamycin (TOR), an evolutionarily conserved serine/threonine kinase that regulates cell growth and cell cycle through its ability to integrate signals from nutrient levels and growth factors. TOR activity is stimulated by Rheb, a member of the Ras superfamily of G-proteins, when the GTP/GDP ratio bound to Rheb is high. Immunoprecipitated TSC1/TSC2 has been shown to stimulate Rheb GTPase activity in vitro, suggesting that the TSC1/TSC2 complex decreases the ability of Rheb to stimulate TOR activity. This is supported by experiments showing that overexpression of TSC1 and TSC2 results in a significant decrease in the GTP/GDP ratio bound to Rheb and the inhibition of cell growth. At least three isoforms of TSC2 exist.

Overview

Product Name	Anti-Tuberin TSC2 Antibody
Reactive Species	Human, Mouse
Description	Boster Bio Anti-Tuberin TSC2 Antibody (Catalog # A00229). Tested in ELISA, WB, ICC, IF applications. This antibody reacts with Human, Mouse.
Application	ELISA, IF, ICC, WB
Clonality	Polyclonal
Formulation	TSC2 Antibody is supplied in PBS containing 0.02% sodium azide.
Storage Instructions	TSC2 antibody can be stored at 4°C for three months and -20°C, stable for up to one year. Avoid repeated freeze-thaw cycles. Antibodies should not be exposed to prolonged high temperatures.
Host	Rabbit
Uniprot ID	P49815

Technical Details

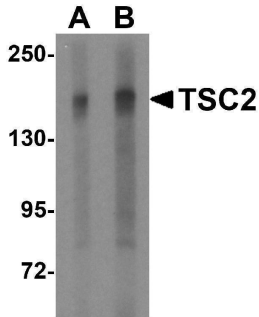
Immunogen	TSC2 (NT) was raised against a 14 amino acid synthetic peptide from near the amino terminus of human TSC2. The immunogen is located within the first 50 amino acids of TSC2.
Predicted Reactive Species	Rat
Isotype	IgG
Form	Liquid
Concentration	1 mg/mL
Purification	TSC2 Antibody is affinity chromatography purified via peptide column.

Suggested Dilutions

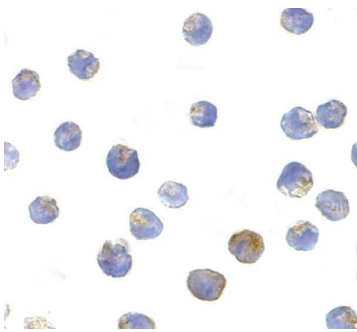
TSC2 antibody can be used for the detection of TSC2 by Western blot at 2 and 4 ug/mL. Antibody can also be used for immunocytochemistry starting at 10 ug/mL. For immunofluorescence start at 20 ug/mL.

Antibody validated: Western Blot in mouse samples; Immunocytochemistry in mouse samples and Immunofluorescence in mouse samples. All other applications and species not yet tested. Optimal dilutions for each application should be determined by the researcher.

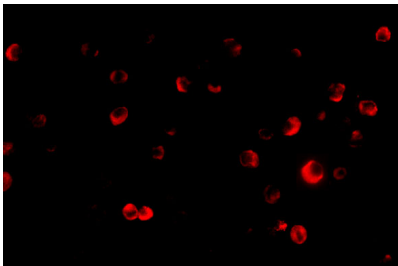
Anti-Tuberin TSC2 Antibody (A00229) Images



Western blot analysis of TSC2 in L1210 cell lysate with TSC2 antibody at (A) 2 and (B) 4 ug/mL.



Immunocytochemistry of TSC2 in L1210 cells with TSC2 antibody at 10 ug/mL.



Immunofluorescence of TSC2 in L1210 cells with TSC2 antibody at 20 ug/mL.

Submit a product review to [Biocompare.com](https://www.biocompare.com)

Submit a review of this product to [Biocompare.com](https://www.biocompare.com) to receive a \$20 Amazon.com giftcard! Your reviews help your fellow scientists make the right decisions. Thank you for your contribution.



Anti-Tuberin TSC2 Antibody

For Research Use Only. Not for use in diagnostic procedures.