

Anti-TSC2 (phospho-T1462) Antibody

Catalog Number: A00229T1462-1

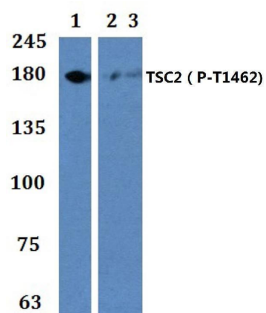
Overview

Product Name	Anti-TSC2 (phospho-T1462) Antibody
Reactive Species	Human, Mouse, Rat
Description	Boster Bio Anti-TSC2 (phospho-T1462) Antibody catalog # A00229T1462-1. Tested in WB applications. This antibody reacts with Human, Mouse, Rat.
Application	WB
Clonality	Polyclonal
Formulation	Rabbit IgG, 1mg/ml in PBS with 0.02% sodium azide, 50% glycerol, pH7.2
Storage Instructions	Store at -20°C for one year. For short term storage and frequent use, store at 4°C for up to one month. Avoid repeated freeze-thaw cycles.
Host	Rabbit
Uniprot ID	P49815

Technical Details

Immunogen	A synthetic peptide corresponding to residues in Human TSC2 around the phosphorylation site of Thr1462.
Cross Reactivity	No cross reactivity with other proteins.
Isotype	IgG
Form	Liquid
Concentration	1 mg/ml
Purification	The antibody was affinity-purified from rabbit antiserum by affinity-chromatography using epitope-specific immunogen and the purity is > 95% (by SDS-PAGE).
Suggested Dilutions	WB: 1:500-1:1000

Anti-TSC2 (phospho-T1462) Antibody (A00229T1462-1) Images



Western blot (WB) analysis of p-TSC2 (T1462) polyclonal antibody at 1:500 dilution Lane1:HEK293T cell lysate Insulin (30ng/ml,5min) Lane2:H9C2 cell lysateEGF (20ng/ml,30min) Lane3:Raw264.7 cell lysate EGF (20ng/ml,30min)

Submit a product review to Biocompare.com

Submit a review of this product to Biocompare.com to receive a \$20 Amazon.com giftcard! Your reviews help your fellow scientists make the right decisions. Thank you for your contribution.



Anti-TSC2 (phospho-T1462) Antibody

For Research Use Only. Not for use in diagnostic procedures.