

Anti-Vimentin (Phospho-Tyr38) Antibody

Catalog Number: A00235Y38

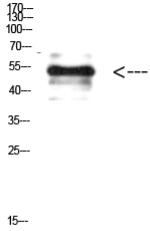
Overview

Product Name	Anti-Vimentin (Phospho-Tyr38) Antibody
Reactive Species	Human, Mouse, Rat
Description	Boster Bio Anti-Vimentin (Phospho-Tyr38) Antibody catalog # A00235Y38. Tested in ELISA, WB applications. This antibody reacts with Human, Mouse, Rat.
Application	ELISA, WB
Clonality	Polyclonal
Formulation	PBS, pH 7.4, containing 0.02% sodium azide as Preservative and 50% Glycerol.
Storage Instructions	Store at -20°C for one year. For short term storage and frequent use, store at 4°C for up to one month. Avoid repeated freeze-thaw cycles.
Host	Rabbit
Uniprot ID	P08670

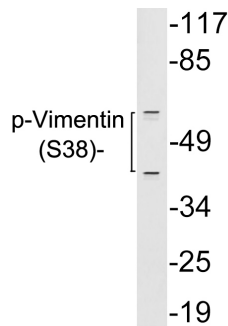
Technical Details

Immunogen	Synthesized phospho-peptide around the phosphorylation site of human Vimentin (Phospho-Tyr38)
Cross Reactivity	No cross reactivity with other proteins.
Isotype	IgG
Form	Liquid
Concentration	1 mg/ml
Purification	The antibody was affinity-purified from rabbit serum by affinity-chromatography using specific immunogen.
Suggested Dilutions	WB 1:500-10000 ELISA 1:10000

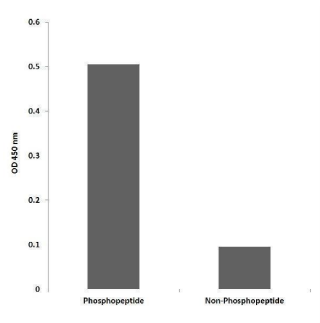
Anti-Vimentin (Phospho-Tyr38) Antibody (A00235Y38) Images



Western Blot analysis of HELA cells using Antibody diluted at 500. Secondary antibody was diluted at 1:20000



Western blot analysis of lysates from 293 cells treated with paclitaxel, using p-Vimentin (Phospho-Ser38) antibody.



Enzyme-Linked Immunosorbent Assay (Phospho-ELISA) for Immunogen Phosphopeptide (Phospho-left) and Non-Phosphopeptide (Phospho-right), using Vimentin (Phospho-Ser38) Antibody

Submit a product review to Biocompare.com

Submit a review of this product to Biocompare.com to receive a \$20 Amazon.com giftcard! Your reviews help your fellow scientists make the right decisions. Thank you for your contribution.



Anti-Vimentin (Phospho-Tyr38) Antibody

For Research Use Only. Not for use in diagnostic procedures.