

Anti-CRP/C Reactive Protein Antibody

Catalog Number: A00249

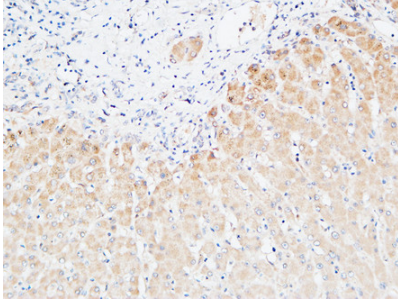
Overview

Product Name	Anti-CRP/C Reactive Protein Antibody
Reactive Species	Human, Rat
Description	Boster Bio Anti-CRP/C Reactive Protein Antibody catalog # A00249. Tested in WB, IHC, IF, ELISA applications. This antibody reacts with Human, Rat.
Application	ELISA, IF, IHC, WB
Clonality	Polyclonal
Formulation	Liquid in PBS containing 50% glycerol, 0.5% stabilizing protein and 0.02% sodium azide. *This antibody is supplied in a stabilized formulation. Compatibility with conjugation reactions depends on the chemistry of the conjugation method used. For conjugation methods that are not compatible with the stabilizing components present in this formulation, a carrier-free antibody format is required.
Storage Instructions	Store at -20°C for one year. For short term storage and frequent use, store at 4°C for up to one month. Avoid repeated freeze-thaw cycles.
Host	Rabbit
Uniprot ID	P02741

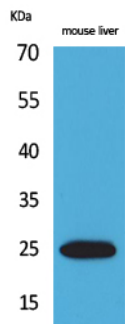
Technical Details

Immunogen	The antiserum was produced against synthesized peptide derived from the Internal region of human CRP. AA range:101-150
Isotype	IgG
Form	Liquid
Concentration	1 mg/ml
Purification	Immunogen affinity purified
Suggested Dilutions	WB 1:500-1:2000 IHC: 1:100-300 ELISA 1:20000 IF 1:50-200

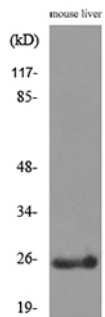
Anti-CRP/C Reactive Protein Antibody (A00249) Images



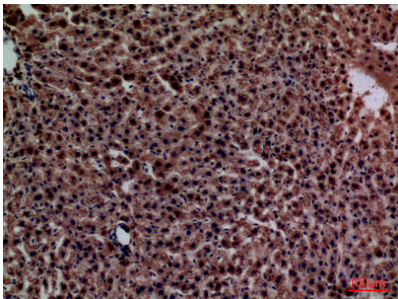
Immunohistochemical analysis of paraffin-embedded Human Liver. 1, Antibody was diluted at 1:200 (4° overnight). 2, High-pressure and temperature EDTA, pH8.0 was used for antigen retrieval. 3, Secondary antibody was diluted at 1:200 (room temperature, 30min).



Western Blot analysis of mouse liver cells using CRP Polyclonal Antibody. Secondary antibody was diluted at 1:20000

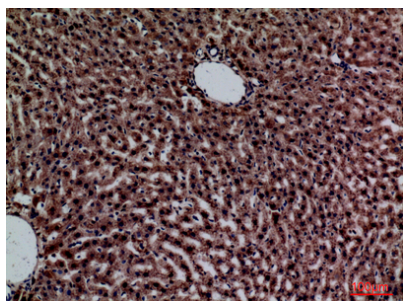


Western blot analysis of lysate from mouse liver cells, using CRP Antibody.



Immunohistochemical analysis of paraffin-embedded rat-liver, antibody was diluted at 1:100

Immunohistochemical analysis of paraffin-embedded rat-liver, antibody was diluted at 1:100



Submit a product review to Biocompare.com

Submit a review of this product to Biocompare.com to receive a \$20 Amazon.com giftcard! Your reviews help your fellow scientists make the right decisions. Thank you for your contribution.



Anti-CRP/C Reactive Protein Antibody

For Research Use Only. Not for use in diagnostic procedures.