

Anti-CRP Antibody Fluorescein Conjugated

Catalog Number: A00249-3

About CRP

CRP (C-Reactive Protein) belongs to the pentaxin family. It is involved in several host defense related functions based on its ability to recognize foreign pathogens and damaged cells of the host and to initiate their elimination by interacting with humoral and cellular effector systems in the blood. It promotes agglutination, bacterial capsular swelling, phagocytosis and complement fixation through its calcium-dependent binding to phosphorylcholine. Consequently, the level of this protein in plasma increases greatly during acute phase response to tissue injury, infection, or other inflammatory stimuli. CRP can interact with DNA and histones and may scavenge nuclear material released from damaged circulating cells. Diseases associated with CRP include Acute Pancreatitis and Appendicitis. Anti-CRP Antibody is ideal for researchers interested in cAMP Dependent PKA, IL6 signaling, calcium ion binding, and cholesterol binding.

Overview

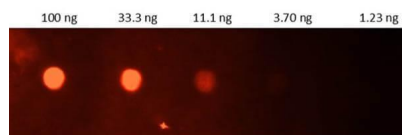
Product Name	Anti-CRP Antibody Fluorescein Conjugated
Reactive Species	Human
Description	Boster Bio Anti-CRP Antibody Fluorescein Conjugated (Catalog # A00249-3). Tested in Dot blot applications. This antibody reacts with Human.
Conjugate	FITC
Application	IF, WB, FLISA
Clonality	Polyclonal
Formulation	0.01 M Sodium Phosphate, 0.15 M Sodium Chloride, pH 7.2, antibody formulated with stabilizing protein (10 mg/mL) - Immunoglobulin and Protease free, 0.01% (w/v) Thimerosal *This antibody is supplied in a stabilized formulation. Compatibility with conjugation reactions depends on the chemistry of the conjugation method used. For conjugation methods that are not compatible with the stabilizing components present in this formulation, a carrier-free antibody format is required.
Storage Instructions	Store vial at 4°C prior to restoration. For extended storage aliquot contents and freeze at -20°C or below. Avoid cycles of freezing and thawing. Centrifuge product if not completely clear after standing at room temperature. This product is stable for several weeks at 4°C as an undiluted liquid. Dilute only prior to immediate use. Expiration date is one (1) year from date of opening. (Ship at ambient temperature.)
Host	Goat
Uniprot ID	P02741

Technical Details

Immunogen	Human CRP (Capsular Reactive Protein)
-----------	---------------------------------------

Predicted Reactive Species	Bovine, Canine, Monkey
Isotype	IgG
Form	Lyophilized
Concentration	2.0 mg/mL by UV absorbance at 280 nm
Purification	This product is an IgG fraction antibody purified from monospecific antiserum by a multi-step process which includes delipidation, salt fractionation and ion exchange chromatography followed by extensive dialysis against the buffer stated above. Assay by immunoelectrophoresis resulted in a single precipitin arc against anti-fluorescein, anti-Goat Serum, purified and partially purified Human CRP.
Suggested Dilutions	Fluorochrome Protein Value: 2.2 IF Microscopy: User optimized WB: User optimized Anti-CRP FITC conjugated antibody has been tested by dot blot and is designed for immunofluorescence microscopy, fluorescence based plate assays (FLISA) and fluorescent western blotting. This product is also suitable for multiplex analysis, including multicolor imaging, utilizing various commercial platforms.

Anti-CRP Antibody Fluorescein Conjugated (A00249-3) Images



Dot Blot of Goat Anti-Human CRP Antibody FITC. Lane 1: 100ng. Lane 2: 33.3ng. Lane 3: 11.1ng. Lane 4: 3.7ng. Lane 5: 1.23ng. Secondary Antibody: 209-1232 Gt-a-hu CRP Fluorescein 1:1000. Blocking Buffer: MB-073 for 1 hour RT.

Submit a product review to Biocompare.com

Submit a review of this product to Biocompare.com to receive a \$20 Amazon.com giftcard! Your reviews help your fellow scientists make the right decisions. Thank you for your contribution.



Anti-CRP Antibody Fluorescein Conjugated

For Research Use Only. Not for use in diagnostic procedures.