

Anti-HSF1 (Phospho-S326) Antibody

Catalog Number: A00250S326

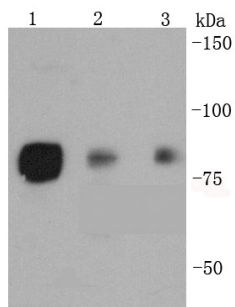
Overview

Product Name	Anti-HSF1 (Phospho-S326) Antibody
Reactive Species	Human
Description	Boster Bio Anti-HSF1 (Phospho-S326) Antibody catalog # A00250S326. Tested in WB, ICC, IHC, IP, Flow Cytometry applications. This antibody reacts with Human.
Application	Flow Cytometry, IP, IHC, ICC, WB
Clonality	Polyclonal
Formulation	Rabbit IgG, 1mg/ml in PBS with 0.02% sodium azide, 50% glycerol, pH7.2
Storage Instructions	Store at -20°C for one year. For short term storage and frequent use, store at 4°C for up to one month. Avoid repeated freeze-thaw cycles.
Host	Rabbit
Uniprot ID	Q00613

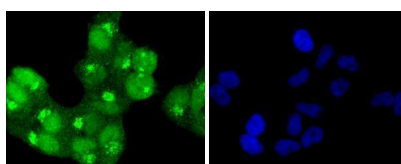
Technical Details

Immunogen	Synthetic phospho-peptide corresponding to residues surrounding Ser326 of human HSF1.
Cross Reactivity	No cross reactivity with other proteins.
Isotype	IgG
Form	Liquid
Concentration	1 mg/ml
Purification	ProA affinity purified
Suggested Dilutions	WB: 1:1,000-1:2,000 ICC: 1:50-1:200 IHC: 1:50-1:200 FC: 1:50-1:100

Anti-HSF1 (Phospho-S326) Antibody (A00250S326) Images



Western blot analysis of p-HSF1(S326) on different lysates using anti-p-HSF1(S326) antibody at 1/1,000 dilution.
Positive control: Lane 1: Hela Lane 2: BT20 Lane 3: AGS



ICC staining p-HSF1(S326) in HeLa cells (green). The nuclear counter stain is DAPI (blue). Cells were fixed in paraformaldehyde, permeabilised with 0.25% Triton X100/PBS.

Submit a product review to [Biocompare.com](https://www.biocompare.com)

Submit a review of this product to [Biocompare.com](https://www.biocompare.com) to receive a \$20 Amazon.com giftcard! Your reviews help your fellow scientists make the right decisions. Thank you for your contribution.



Anti-HSF1 (Phospho-S326) Antibody

For Research Use Only. Not for use in diagnostic procedures.