

Anti-Angiotensin-converting enzyme ACE Antibody

Catalog Number: A00251-1

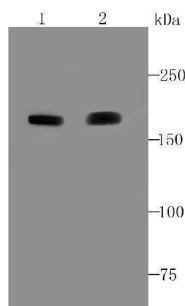
Overview

Product Name	Anti-Angiotensin-converting enzyme ACE Antibody
Reactive Species	Human, Mouse
Description	Boster Bio Anti-Angiotensin-converting enzyme ACE Antibody catalog # A00251-1. Tested in WB,IHC,Flow Cytometry applications. This antibody reacts with Human,Mouse.
Application	Flow Cytometry, IHC, WB
Clonality	Polyclonal
Formulation	Rabbit IgG, 1mg/ml in PBS with 0.02% sodium azide, 50% glycerol, pH7.2
Storage Instructions	Store at -20°C for one year. For short term storage and frequent use, store at 4°C for up to one month. Avoid repeated freeze-thaw cycles.
Host	Rabbit
Uniprot ID	P12821

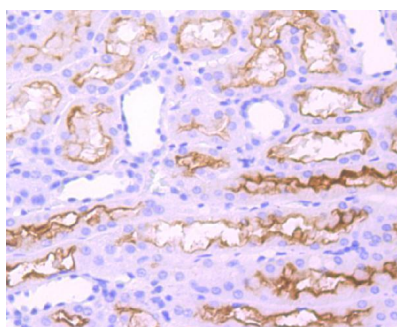
Technical Details

Immunogen	recombinant protein
Cross Reactivity	No cross reactivity with other proteins.
Isotype	IgG
Form	Liquid
Concentration	1 mg/ml
Purification	ProA affinity purified
Suggested Dilutions	WB: 1:500-1:2,000 IHC: 1:100-1:500 FC: 1:50-1:100

Anti-Angiotensin-converting enzyme ACE Antibody (A00251-1) Images



Western blot analysis of ACE on human lung (1) and mouse kidney (2) cell lysate using anti-ACE antibody at 1/1,000 dilution.



Immunohistochemical analysis of paraffin-embedded human kidney tissue using anti-ACE antibody. Counter stained with hematoxylin.

Submit a product review to Biocompare.com

Submit a review of this product to Biocompare.com to receive a \$20 Amazon.com giftcard! Your reviews help your fellow scientists make the right decisions. Thank you for your contribution.



Anti-Angiotensin-converting enzyme ACE Antibody

For Research Use Only. Not for use in diagnostic procedures.