

Anti-Ki67/MKI67 Antibody

Catalog Number: A00254-1

About MKI67

Ki-67(Proliferation-related Ki-67 antigen), also known as MKI67 or KIA, is a protein that in humans is encoded by the MKI67 gene. From study of a panel of human-rodent somatic cell hybrids, it has been demonstrated that a gene involved in the expression of the MKI67 antigen is located on chromosome 10. By in situ hybridization, Fonatsch et al. (1991) regionalized the MKI67 gene to chromosome 10q25-qter. By FISH, Traut et al. (1998) mapped the mouse Mki67 gene to chromosome 7F3-F5. Antigen KI-67 is a nuclear protein that is associated with and may be necessary for cellular proliferation. Furthermore it is associated with ribosomal RNA transcription. Inactivation of antigen KI-67 leads to inhibition of ribosomal RNA synthesis.

Overview

| | |
|----------------------|---|
| Product Name | Anti-Ki67/MKI67 Antibody |
| Reactive Species | Human |
| Description | Boster Bio Anti-Ki67/MKI67 Antibody catalog # A00254-1. Tested in ELISA, IHC applications. This antibody reacts with Human. |
| Application | ELISA, IHC |
| Clonality | Polyclonal |
| Formulation | Each vial contains 4 mg Trehalose, 0.9 mg NaCl, 0.2 mg Na2HPO4. |
| Storage Instructions | At -20°C for one year from date of receipt. After reconstitution, at 4°C for one month. It can also be aliquotted and stored frozen at -20°C for six months. Avoid repeated freezing and thawing. |
| Host | Rabbit |
| Uniprot ID | P46013 |

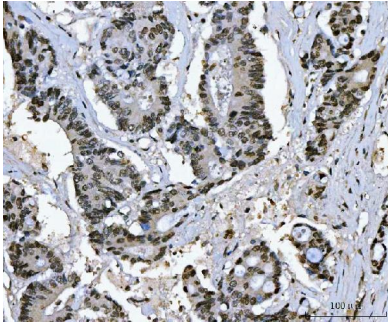
Technical Details

| | |
|-------------------------------|--|
| Immunogen | E.coli-derived human Ki67/MKI67 recombinant protein (Position: R5-Q2358). |
| Recommended Detection Systems | Boster recommends HRP Conjugated anti-Rabbit IgG Super Vision Assay Kit (SV0002-1) for IHC(P). |
| Cross Reactivity | No cross-reactivity with other proteins. |
| Isotype | Rabbit IgG |
| Form | Lyophilized |
| Concentration | Adding 0.2 ml of distilled water will yield a concentration of 500 ug/ml. |
| Purification | Immunogen affinity purified. |

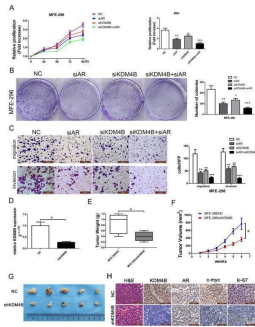
Suggested Dilutions

Immunohistochemistry(Paraffin-embedded Section), 2-5 ug/ml, Human
ELISA, 0.1-0.5 ug/ml, -

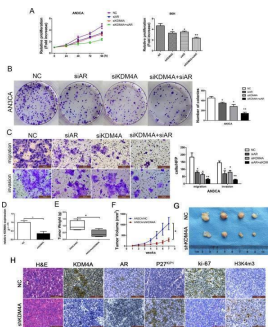
Anti-Ki67/MKI67 Antibody (A00254-1) Images



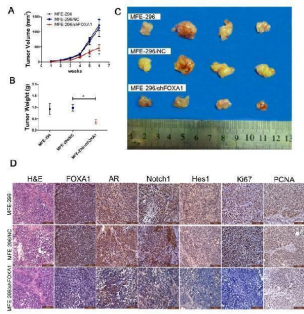
IHC analysis of Ki67/MKI67 using anti-Ki67/MKI67 antibody (A00254-1). Ki67/MKI67 was detected in a paraffin-embedded section of human colonic adenocarcinoma tissue. Heat mediated antigen retrieval was performed in EDTA buffer (pH 8.0, epitope retrieval solution). The tissue section was blocked with 10% goat serum. The tissue section was then incubated with 2 ug/ml rabbit anti-Ki67/MKI67 Antibody (A00254-1) overnight at 4°C. Peroxidase Conjugated Goat Anti-rabbit IgG was used as secondary antibody and incubated for 30 minutes at 37°C. The tissue section was developed using HRP Conjugated Rabbit IgG Super Vision Assay Kit (Catalog # SV0002) with DAB as the chromogen.



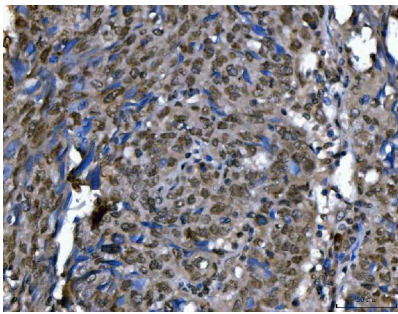
KDM4B promotes AR-mediated carcinogenesis in MFE-296 cells. MFE-296 cells were transiently transfected with negative control (NC), AR (siAR) siRNA, KDM4B (siKDM4B) siRNA or KDM4B and AR siRNA together (siKDM4B+siAR). Cell proliferation was determined by MTT assay A. and colony formation assays B, C. Migrated and invasive MFE-296 cells on the lower surface of the Transwell filter were stained and photographed, 200×. The number of migrated and invasive cells is shown on the right. * P < 0.05, ** P < 0.01, *** P < 0.005 compared with the NC group. D. KDM4B knockdown efficiency in shKDM4B group was confirmed by qRT-PCR. The tumor weight E. and tumor volumes F. and G. formed from nude mice injected subcutaneously with MFE-296 cells stably transfected with NC (MFE-296/NC) or shKDM4B (MFE-296/shKDM4B) were shown. H. Staining with hematoxylin and eosin (H&E) or immunohistochemical staining for KDM4B, AR, c-myc, and ki-67 in mouse tumor tissues (400×). Index in PubMed under a CC BY license. PMID: 26397136



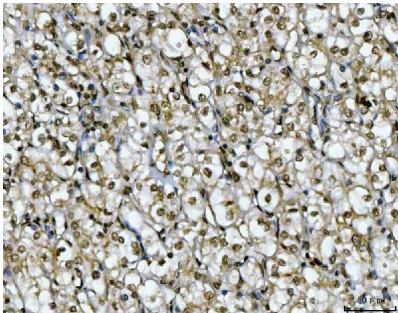
KDM4A, but not KDM4B, promotes AR-mediated carcinogenesis in AN3CA cells. A. AN3CA cells were transiently transfected with negative control (NC), AR (siAR) siRNA, KDM4A (siKDM4A) siRNA or KDM4A and AR siRNA together (siKDM4A+siAR). Cell proliferation was determined by the MTT assay (A) and colony formation assays B, C. Migrated and invasive AN3CA cells on the lower surface of the Transwell filter were stained and photographed, 200×. The number of migrated and invasive cells is shown on the right. * P < 0.05, ** P < 0.01 compared with the NC group. D. KDM4A knockdown efficiency in shKDM4A group was confirmed by qRT-PCR. Tumor weight E. and tumor volumes F. and G. from nude mice injected subcutaneously with AN3CA cells stably transfected with NC (AN3CA/NC) or shKDM4A (AN3CA/shKDM4A). H. Staining with hematoxylin and eosin (H&E) or immunohistochemical staining for KDM4A, AR, p27 kip1, ki-67 and H3k4me3 in mouse tumor tissues (400×). Index in PubMed under a CC BY license. PMID: 26397136



Tumorigenicity assay in nude mice. A : The growth rates of tumors formed from untransfected MFE-296 cells (MFE-296) and MFE-296 cells transfected with NC (MFE-296/NC) or shFOX1 (MFE-296/shFOX1). After injection, tumor volumes were calculated every seven days. B and C : Six weeks after injection of MFE-296, MFE-296-NC, and MFE-296-shFOX1 cells, tumors were removed, and the tumor weights and volumes were determined. Arithmetic means and SD are shown. D : Staining with hematoxylin and eosin (H&E) or immunohistochemical staining for FOXA1, AR, Notch1, Hes1, Ki67, and PCNA in tumor tissues (immunohistochemical staining, 200×). *p<0.05 compared with the NC group. Index in PubMed under a CC BY license. PMID: 24512546



IHC analysis of Ki67/MKI67 using anti-Ki67/MKI67 antibody (A00254-1). Ki67/MKI67 was detected in a paraffin-embedded section of human lung cancer tissue. Heat mediated antigen retrieval was performed in EDTA buffer (pH 8.0, epitope retrieval solution). The tissue section was blocked with 10% goat serum. The tissue section was then incubated with 2 ug/ml rabbit anti-Ki67/MKI67 Antibody (A00254-1) overnight at 4°C. Peroxidase Conjugated Goat Anti-rabbit IgG was used as secondary antibody and incubated for 30 minutes at 37°C. The tissue section was developed using HRP Conjugated Rabbit IgG Super Vision Assay Kit (Catalog # SV0002) with DAB as the chromogen.

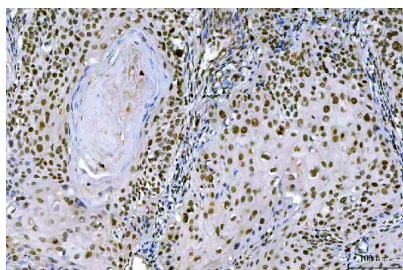


IHC analysis of Ki67/MKI67 using anti-Ki67/MKI67 antibody (A00254-1). Ki67/MKI67 was detected in a paraffin-embedded section of human renal carcinoma tissue. Heat mediated antigen retrieval was performed in EDTA buffer (pH 8.0, epitope retrieval solution). The tissue section was blocked with 10% goat serum. The tissue section was then incubated with 2 ug/ml rabbit anti-Ki67/MKI67 Antibody (A00254-1) overnight at 4°C. Peroxidase Conjugated Goat Anti-rabbit IgG was used as secondary antibody and incubated for 30 minutes at 37°C. The tissue section was developed using HRP Conjugated Rabbit IgG Super Vision Assay Kit (Catalog # SV0002) with DAB as the chromogen.



IHC analysis of Ki67/MKI67 using anti-Ki67/MKI67 antibody (A00254-1). Ki67/MKI67 was detected in a paraffin-embedded section of human tonsil tissue. Heat mediated antigen retrieval was performed in EDTA buffer (pH 8.0, epitope retrieval solution). The tissue section was blocked with 10% goat serum. The tissue section was then incubated with 2 ug/ml rabbit anti-Ki67/MKI67 Antibody (A00254-1) overnight at 4°C. Peroxidase Conjugated Goat Anti-rabbit IgG was used as secondary antibody and incubated for 30 minutes at 37°C. The tissue section was developed using HRP Conjugated Rabbit IgG Super Vision Assay Kit (Catalog # SV0002) with DAB as the chromogen.

IHC analysis of Ki67/MKI67 using anti-Ki67/MKI67 antibody



(A00254-1). Ki67/MKI67 was detected in a paraffin-embedded section of human laryngeal squamous cell carcinoma tissue. Heat mediated antigen retrieval was performed in EDTA buffer (pH 8.0, epitope retrieval solution). The tissue section was blocked with 10% goat serum. The tissue section was then incubated with 2 ug/ml rabbit anti-Ki67/MKI67 Antibody (A00254-1) overnight at 4°C. Peroxidase Conjugated Goat Anti-rabbit IgG was used as secondary antibody and incubated for 30 minutes at 37°C. The tissue section was developed using HRP Conjugated Rabbit IgG Super Vision Assay Kit (Catalog # SV0002) with DAB as the chromogen.

Submit a product review to Biocompare.com

Submit a review of this product to Biocompare.com to receive a \$20 Amazon.com giftcard! Your reviews help your fellow scientists make the right decisions. Thank you for your contribution.



Anti-Ki67/MKI67 Antibody

For Research Use Only. Not for use in diagnostic procedures.