

Anti-E2F-1 (D426) Antibody

Catalog Number: A00257

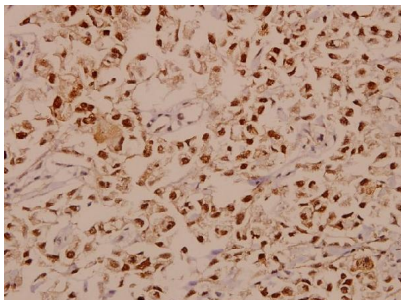
Overview

Product Name	Anti-E2F-1 (D426) Antibody
Reactive Species	Human, Mouse, Rat
Description	Boster Bio Anti-E2F-1 (D426) Antibody catalog # A00257. Tested in IHC applications. This antibody reacts with Human,Mouse,Rat.
Application	IHC
Clonality	Polyclonal
Formulation	Rabbit IgG, 1mg/ml in PBS with 0.02% sodium azide, 50% glycerol, pH7.2
Storage Instructions	Store at -20°C for one year. For short term storage and frequent use, store at 4°C for up to one month. Avoid repeated freeze-thaw cycles.
Host	Rabbit
Uniprot ID	Q01094

Technical Details

Immunogen	Synthetic peptide, corresponding to amino acids 400-450 of Human E2F-1.
Isotype	IgG
Form	Liquid
Concentration	1.33 mg/mL by UV absorbance at 280 nm
Purification	The antibody was affinity-purified from rabbit antiserum by affinity-chromatography using epitope-specific immunogen and the purity is > 95% (by SDS-PAGE).
Suggested Dilutions	IHC: 1:50-1:200

Anti-E2F-1 (D426) Antibody (A00257) Images



Immunohistochemistry (IHC) analyzes of E2F-1 (D426) pAb in paraffin-embedded human breast carcinoma tissue at 1:50.

Submit a product review to Biocompare.com

Submit a review of this product to Biocompare.com to receive a \$20 Amazon.com giftcard! Your reviews help your fellow scientists make the right decisions. Thank you for your contribution.



Anti-E2F-1 (D426) Antibody

For Research Use Only. Not for use in diagnostic procedures.