

## Anti-MDA5 IFIH1 Antibody

Catalog Number: A00263

### About IFIH1

The innate immune system detects viral infection by recognizing various viral components and triggers antiviral responses. Like the toll-like receptor 3 (TLR3), the melanoma differentiation-associated protein 5 (MDA5) recognizes double-stranded (ds) RNA, a molecular pattern associated with viral infection. MDA5, a member of the DEAD/DEAH-box RNA helicase family, consists of an amino-terminal caspase recruitment domain (CARD) and a carboxyl-terminal RNA helicase domain similar to that of the related protein RIG-1. When stimulated by dsRNA, MDA5 recruits the adaptor protein VISA and ultimately causes the activation of IRF-3 and NF-kappaB. MDA5 and RIG-1 recognize different types of dsRNA, with MDA5 recognizing poly (I:C). MDA5-null mice were highly susceptible to infection with picornaviruses, which possess such sequences, demonstrating the importance of MDA5 in innate immunity.

### Overview

Product Name	Anti-MDA5 IFIH1 Antibody
Reactive Species	Human, Mouse
Description	Boster Bio Anti-MDA5 IFIH1 Antibody (Catalog # A00263). Tested in ELISA, WB, IHC-P, IF applications. This antibody reacts with Human, Mouse.
Application	ELISA, IF, IHC-P, WB
Clonality	Polyclonal
Formulation	MDA5 Antibody is supplied in PBS containing 0.02% sodium azide.
Storage Instructions	MDA5 antibody can be stored at 4°C for three months and -20°C, stable for up to one year. Avoid repeated freeze-thaw cycles. Antibodies should not be exposed to prolonged high temperatures.
Host	Rabbit
Uniprot ID	Q9BYX4

### Technical Details

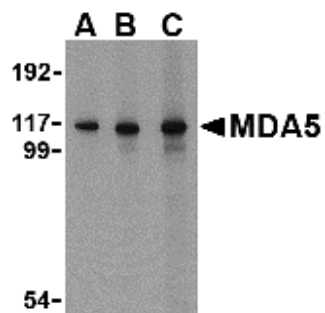
Immunogen	MDA5 antibody was raised against a 16 amino acid synthetic peptide from near the carboxy terminus of human MDA5. The immunogen is located within the last 50 amino acids of MDA5.
Predicted Reactive Species	Chicken
Isotype	IgG
Form	Liquid
Concentration	1 mg/mL
Purification	MDA5 Antibody is affinity chromatography purified via peptide column.

Suggested Dilutions

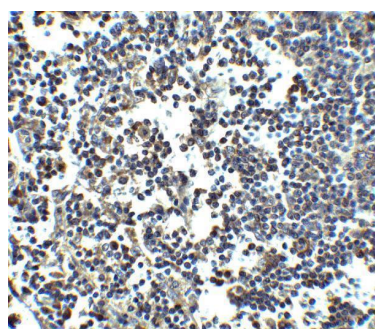
MDA5 antibody can be used for detection of MDA5 by Western blot at 1 - 4 ug/mL. Antibody can also be used for immunohistochemistry starting at 5 ug/mL. For immunofluorescence start at 20 ug/mL.

Antibody validated: Western Blot in human samples; Immunohistochemistry in human samples and Immunofluorescence in human samples. All other applications and species not yet tested. Optimal dilutions for each application should be determined by the researcher.

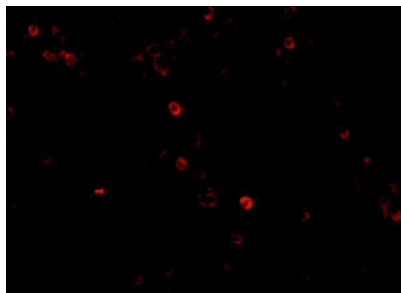
## Anti-MDA5 IFIH1 Antibody (A00263) Images



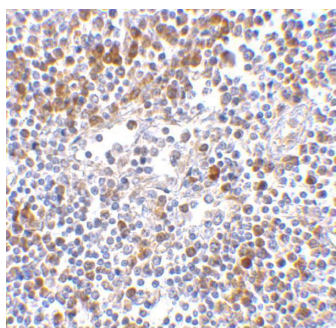
Western blot analysis of MDA5 in Daudi cell lysate with MDA5 antibody at (A) 1, (B) 2 and (C) 4 ug/mL.



Immunohistochemistry of MDA5 in human lymph node tissue with MDA5 antibody at 2.5 ug/ml.



Immunofluorescence of MDA5 in Human Lymph Node cells with MDA5 antibody at 20 ug/mL.



Immunohistochemistry of MDA5 in human lymph node tissue with MDA5 antibody at 5 ug/mL.

### Submit a product review to [Biocompare.com](https://www.biocompare.com)

Submit a review of this product to [Biocompare.com](https://www.biocompare.com) to receive a \$20 Amazon.com giftcard! Your reviews help your fellow scientists make the right decisions. Thank you for your contribution.



For Research Use Only. Not for use in diagnostic procedures.