

Anti-IRS-1 (phospho-S1101) Antibody

Catalog Number: A00268S1101

Overview

Product Name	Anti-IRS-1 (phospho-S1101) Antibody
Reactive Species	Human
Description	Boster Bio Anti-IRS-1 (phospho-S1101) Antibody catalog # A00268S1101. Tested in WB,IHC applications. This antibody reacts with Human.
Application	IHC, WB
Clonality	Polyclonal
Formulation	Rabbit IgG, 1mg/ml in PBS with 0.02% sodium azide, 50% glycerol, pH7.2
Storage Instructions	Store at -20°C for one year. For short term storage and frequent use, store at 4°C for up to one month. Avoid repeated freeze-thaw cycles.
Host	Rabbit
Uniprot ID	P35568

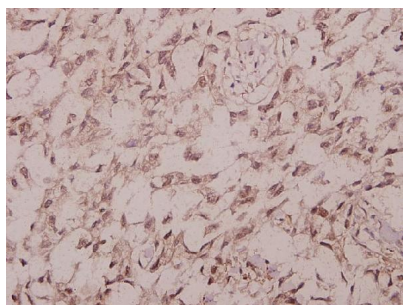
Technical Details

Immunogen	Synthetic phosphopeptide derived from human IRS-1 around the phosphorylation site of Serine 1101.
Isotype	IgG
Form	Liquid
Concentration	1 mg/ml
Purification	The antibody was affinity-purified from rabbit antiserum by affinity-chromatography using epitope-specific immunogen and the purity is > 95% (by SDS-PAGE).
Suggested Dilutions	WB: 1:500-1:1000 IHC: 1:50-1:200

Anti-IRS-1 (phospho-S1101) Antibody (A00268S1101) Images



Western blot (WB) analysis of p-IRS-1 (S1101) pAb at 1:500 dilution Lane1:A375 whole cell lysate(40ug) Lane2:Panc1 whole cell lysate(40ug) Lane3:MCF-7 whole cell lysate(40ug)



Immunohistochemistry (IHC) analyzes of P-IRS-1 (S1101) pAb in paraffin-embedded human colorectal carcinoma tissue at 1:50.

Submit a product review to Biocompare.com

Submit a review of this product to Biocompare.com to receive a \$20 Amazon.com giftcard! Your reviews help your fellow scientists make the right decisions. Thank you for your contribution.



Anti-IRS-1 (phospho-S1101) Antibody

For Research Use Only. Not for use in diagnostic procedures.