

## Anti-IRS-1 (phospho-S323) Antibody

Catalog Number: A00268S323

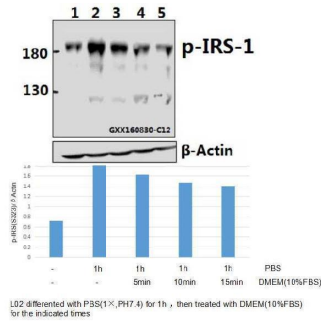
### Overview

Product Name	Anti-IRS-1 (phospho-S323) Antibody
Reactive Species	Human, Mouse, Rat
Description	Boster Bio Anti-IRS-1 (phospho-S323) Antibody catalog # A00268S323. Tested in WB,IHC,IF applications. This antibody reacts with Human,Mouse,Rat.
Application	IF, IHC, WB
Clonality	Polyclonal
Formulation	Rabbit IgG, 1mg/ml in PBS with 0.02% sodium azide, 50% glycerol, pH7.2
Storage Instructions	Store at -20°C for one year. For short term storage and frequent use, store at 4°C for up to one month. Avoid repeated freeze-thaw cycles.
Host	Rabbit
Uniprot ID	P35568

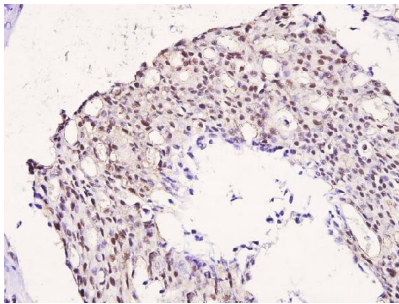
### Technical Details

Immunogen	Synthetic phosphopeptide derived from human IRS-1 around the phosphorylation site of Serine 323.
Isotype	IgG
Form	Liquid
Concentration	1 mg/ml
Purification	The antibody was affinity-purified from rabbit antiserum by affinity-chromatography using epitope-specific immunogen and the purity is > 95% (by SDS-PAGE).
Suggested Dilutions	WB: 1:500-1:1000 IHC: 1:50-1:200 IF: 1:50-1:200

## Anti-IRS-1 (phospho-S323) Antibody (A00268S323) Images



Western blot (WB) analysis of p-IRS-1 (S323) polyclonal antibody at 1:500 dilution Lane1:L02 whole cell lysate(40ug) Lane2:L02 treated with PBS(1xPBS,PH7.4) for 1 hour whole cell lysate Lane3:L02 treated with PBS(1xPBS,PH7.4) for 1 hour then treated with DMEM(10%FBS) for 5min whole cell lysate Lane4:L02 treated with PBS(1xPBS,PH7.4) for 1 hour then treated with DMEM(10%FBS) for 10min whole cell lysate Lane5:L02 treated with PBS(1xPBS,PH7.4) for 1 hour then treated with DMEM(10%FBS) for 15min whole cell lysate



Immunohistochemistry (IHC) analyzes of p-IRS-1 (S323) pAb in paraffin-embedded human breast carcinoma tissue at 1:100.

### Submit a product review to Biocompare.com

Submit a review of this product to Biocompare.com to receive a \$20 Amazon.com giftcard! Your reviews help your fellow scientists make the right decisions. Thank you for your contribution.



Anti-IRS-1 (phospho-S323) Antibody

For Research Use Only. Not for use in diagnostic procedures.