

## Anti-Phospho-IRS-1 (S636) Antibody

Catalog Number: A00268S636

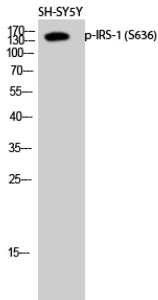
### Overview

|                      |  |
|----------------------|--|
| Product Name         | Anti-Phospho-IRS-1 (S636) Antibody   |
| Reactive Species     | Human, Mouse, Rat  |
| Description          | Boster Bio Anti-Phospho-IRS-1 (S636) Antibody catalog # A00268S636. Tested in WB, IHC, IF, ELISA applications. This antibody reacts with Human, Mouse, Rat.  |
| Application          | ELISA, IF, IHC, WB   |
| Clonality            | Polyclonal   |
| Formulation          | Liquid in PBS containing 50% glycerol, 0.5% stabilizing protein and 0.02% sodium azide.<br>*This antibody is supplied in a stabilized formulation.<br>Compatibility with conjugation reactions depends on the chemistry of the conjugation method used. For conjugation methods that are not compatible with the stabilizing components present in this formulation, a carrier-free antibody format is required. |
| Storage Instructions | Store at -20°C for one year. For short term storage and frequent use, store at 4°C for up to one month. Avoid repeated freeze-thaw cycles.   |
| Host                 | Rabbit   |
| Uniprot ID           | P35568   |

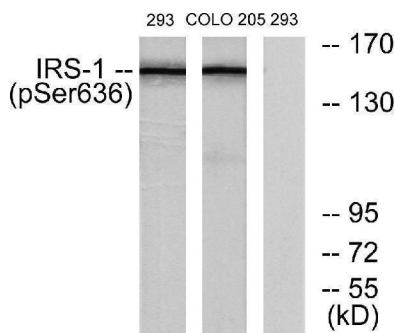
### Technical Details

|                     |   |
|---------------------|---|
| Immunogen           | The antiserum was produced against synthesized peptide derived from human IRS-1 around the phosphorylation site of Ser636. AA range:603-652 |
| Isotype             | IgG   |
| Form                | Liquid  |
| Concentration       | 1 mg/ml   |
| Purification        | The antibody was affinity-purified from rabbit antiserum by affinity-chromatography using epitope-specific immunogen.                       |
| Suggested Dilutions | WB 1:500-1:2000<br>IHC 1:100-1:300<br>IF 1:200-1:1000<br>ELISA 1:20000  |

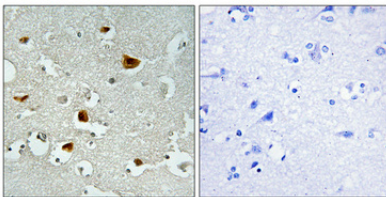
## Anti-Phospho-IRS-1 (S636) Antibody (A00268S636) Images



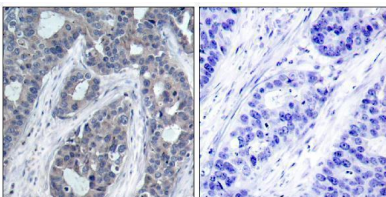
Western Blot analysis of SH-SY5Y cells using Phospho-IRS-1 (S636) Polyclonal Antibody diluted at 1:2000



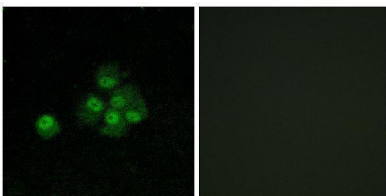
Western blot analysis of lysates from 293 cells and COLO205 cells, using IRS-1 (Phospho-Ser636) Antibody. The lane on the right is blocked with the phospho peptide.



Immunohistochemical analysis of paraffin-embedded Human brain. Antibody was diluted at 1:100 (4° overnight). High-pressure and temperature Tris-EDTA, pH8.0 was used for antigen retrieval. Negative contrl (right) obtained from antibody was pre-absorbed by immunogen peptide.

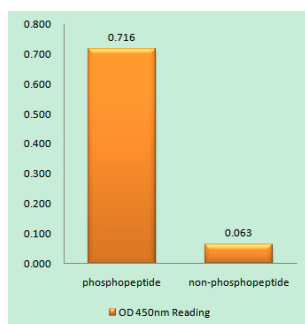


Immunohistochemistry analysis of paraffin-embedded human breast carcinoma, using IRS-1 (Phospho-Ser636) Antibody. The picture on the right is blocked with the phospho peptide.



Immunofluorescence analysis of MCF7 cells, using IRS-1 (Phospho-Ser636) Antibody. The picture on the right is blocked with the phospho peptide.

Enzyme-Linked Immunosorbent Assay (Phospho-ELISA) for Immunogen Phosphopeptide (Phospho-left) and Non-Phosphopeptide (Phospho-right), using IRS-1 (Phospho-Ser636) Antibody



## Submit a product review to Biocompare.com

Submit a review of this product to Biocompare.com to receive a \$20 Amazon.com giftcard! Your reviews help your fellow scientists make the right decisions. Thank you for your contribution.



### Anti-Phospho-IRS-1 (S636) Antibody

For Research Use Only. Not for use in diagnostic procedures.