

Anti-Paired box protein Pax-6 PAX6 Antibody

Catalog Number: A00273

Overview

Product Name	Anti-Paired box protein Pax-6 PAX6 Antibody
Reactive Species	Human, Mouse, Rat
Description	Boster Bio Anti-Paired box protein Pax-6 PAX6 Antibody catalog # A00273. Tested in WB,ICC/IF,IHC applications. This antibody reacts with Human,Mouse,Rat.
Application	IF, IHC, ICC, WB
Clonality	Polyclonal
Formulation	Rabbit IgG, 1mg/ml in PBS with 0.02% sodium azide, 50% glycerol, pH7.2
Storage Instructions	Store at -20°C for one year. For short term storage and frequent use, store at 4°C for up to one month. Avoid repeated freeze-thaw cycles.
Host	Rabbit
Uniprot ID	P26367

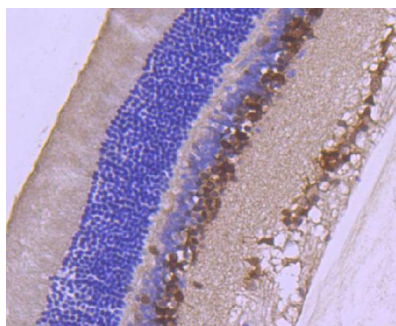
Technical Details

Immunogen	recombinant protein
Isotype	IgG
Form	Liquid
Concentration	1 mg/ml
Purification	ProA affinity purified
Suggested Dilutions	WB: 1:1,000 ICC: 1:50-1:200 IHC: 1:50-1:200

Anti-Paired box protein Pax-6 PAX6 Antibody (A00273) Images



Western blot analysis of PAX6 on Hela cells lysates using anti-PAX6 antibody at 1/1,000 dilution.



Immunohistochemical analysis of paraffin-embedded rat eyeball tissue using anti-PAX6 antibody. Counter stained with hematoxylin.

Submit a product review to Biocompare.com

Submit a review of this product to Biocompare.com to receive a \$20 Amazon.com giftcard! Your reviews help your fellow scientists make the right decisions. Thank you for your contribution.



Anti-Paired box protein Pax-6 PAX6 Antibody

For Research Use Only. Not for use in diagnostic procedures.